



Service Manual Colour Television

Service
Ref.No. **CBP2149-00**
Model No. **CBP2149**



CONTENTS	Page
1. SAFETY PRECAUTIONS	1
2. SPECIFICATIONS SUMMARY	2
3. CHASSIS DESCRIPTION	3~4
4. BLOCK DIAGRAM	5
5. DISASSEMBLY	6
6. CIRCUIT ALIGNMENT	7~8
7. SERVICE CONTROL ADJUSTMENTS	9~11
8. CABINET PARTS LIST	12
9. TUNER CIRCUIT DIAGRAM	13
10. CHASSIS ELECTRICAL PARTS LIST ...	14~25

ORIGINAL VERSION
Chassis Series **E2-G21**

Give complete "SERVICE REF. NO." for parts order or servicing, it is shown on the rating sheet at cabinet back of the unit.

Note
This T.V. receiver will not work properly in a foreign countries where the television transmission system and power source differ from the design specifications. Refer to the specifications for the design specifications.

SAFETY PRECAUTIONS

1. An isolation transformer should be connected in the power line between the receiver and the AC line when a service is performed on the primary of the converter transformer of the set.
2. Comply with all caution and safety-related notes provided on the cabinet back, inside the cabinet, on the chassis or the picture tube.
3. When replacing a chassis in the cabinet, always be certain that all the protective devices are installed properly, such as, control knobs, adjustment covers or shields, barriers, isolation resistor-capacitor networks etc.

Before returning any television to the customer, the service technician must be sure that it is completely safe to operate without danger of electrical shock.

X-RADIATION PRECAUTION

The primary source of X-RADIATION in television receiver is the picture tube. The picture tube is specially constructed to limit X-RADIATION emissions. For continued X-RADIATION protection, the replacement tube must be the same type as the original including suffix letter. Excessive high voltage may produce potentially hazardous X-RADIATION. To avoid such hazards, the high voltage must be maintained within specified limit. Refer to this service manual, high voltage adjustment for specific high voltage limits. If high voltage exceeds specified limits, take necessary corrective action. Carefully follow the instructions for +B1 volt power supply adjustment, and high voltage adjustment to maintain the high voltage within the specified limits.

PRODUCT SAFETY NOTICE

Product safety should be considered when a component replacement is made in any area of a receiver. Components indicated by mark Δ in the parts list and the schematic diagram designate components in which safety can be of special significance. It is particularly recommended that only parts designated on the parts list in this manual be used for component replacement designated by mark Δ . No deviations from resistance wattage or voltage ratings may be made for replacement items designated by mark Δ .

SPECIFICATIONS

Power source	AC 240V, 50Hz
Power consumption	0.065KWh
Television system	System - I
Colour system	PAL
Channel coverage	UHF 21 ~ 69
Aerial input impedance	75 ohms
Intermediate frequencies	Video 39.5 MHz Sound 33.5 MHz Colour 35.07MHz

Audio output	3.0W, 10% distortion
Speaker	5 x 9 cm, 8 ohm
Picture tube	51 cm diagonal, 90 degree Type No. A51JRU40X02(MW)
High voltage	27 KV at Zero beam
Semiconductors	81 Transistors 26 ICs
Dimensions	Width 500mm Height 461mm Depth 480mm
Weight	22Kg
Ext. terminal	
Peritelevision	CENELEC standard 21 pin
Audio monitor	Phone type, variable out

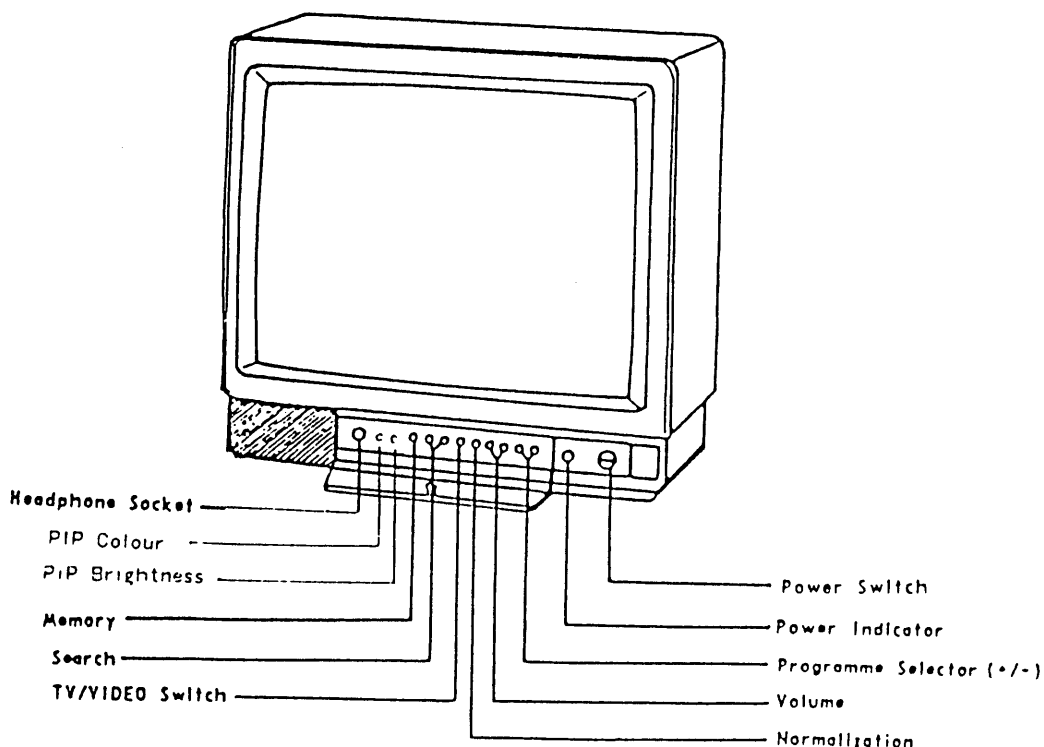
SUMMARY

21" COLOUR TV WITH PIP & TELETEXT

All solid state circuitry for stable quality, less power consumption and high reliability. Simplified chassis construction with 1 main circuit board for easy access and servicing. In-line gun, slotted mask picture tube with 90° deflection angle. Convergence-free tube system.

30 broadcast stations in your reception area can be automatically found by the frequency tuning system. 55 functions infra-red remote control transmitter for TV set and VCR. Computer controlled Teletext decoder and PIP feature is built in.

CONTROLS



CHASSIS DESCRIPTION

POWER SUPPLY

The power supply circuit of the E2G chassis is composed of a rectifier smoothing circuit, an oscillation circuit, a control circuit and an output rectifier circuit.

The AC input voltage is full-wave rectified by the rectifier smoothing circuit, and an astable DC voltage is generated at both terminals of the smoothing capacitor C306. This voltage is input to the oscillation circuit. The oscillation circuit is provided with a blocking oscillator circuit that switches the switching transistor Q303 ON and OFF, and an oscillation frequency and a duty square wave pulse are generated in the input windings according to operation of the control circuit. A square-wave pulse whose size is dependent on the turn ratio of the input and output windings is obtained in the output winding. This is rectified in the output rectifier circuit, and the desired DC voltage is obtained.

IF & DEFLECTION <TDA4505M>

The IF output signal from the tuner passes through the SAW filter, and it is input to pin (8) and pin (9) of IC101. The signal input to the IC passes through the IF amplifier, video detection and video amplifier circuits and is output from pin (17) as a composite video signal. And after this signal is converted to impedance at Q131, supplies to the video and chroma amplifier stages. The input signal from Q131 also passes through the 6.0 MHz trap circuit of X131, and it is input to pin (15) of IC101. The signal input to the IC passes through the SIF amplifier, FM detector, volume control and audio output circuit, and it is then output from pin (12) as audio drive signal.

The sync-separation circuit separates the video signals applied to pin (25) to vertical- and horizontal-sync. signals respectively. The horizontal sync. signal passes through the IC and is applied to the gating circuit, and performs the horizontal oscillation trigger. The horizontal oscillation occurs as a result of the circuit configuration consisting of C401, R401, VR401 and pin (23), and the horizontal free oscillation frequency is adjusted from pin (26). VR411 is for adjustment of the horizontal centring.

The separated vertical-sync. signal from sync. separation circuit passes through the vertical-separation circuit, and applied to trigger divider circuit. The horizontal oscillation pulse and input vertical sync. pulse are monitored by the trigger divider circuit, and switching 50Hz and 60Hz system, the vertical amplitude automatically adjusted for 50Hz and 60Hz.

The output signal from the trigger divider in triggered vertical oscillation circuit consisting of R114, C114 and pin (2), and vertical drive pulse is output from pin (3). VR431 is for changing the amount of AC feedback applied to pin (4) and for adjustment of the vertical amplitude.

AUDIO OUTPUT <AN5265>

The audio signal output from pin (12) of IC101 is input to pin (2) of IC171 and passes through the preamplifier circuit and drive circuit, after which it is input to the audio amplifier. The audio amplifier is an SEPP (single-ended, push-pull) OTL type and output to pin (8) to directly drive the speaker.

VIDEO, CHROMA & R. G. B. <TDA3566/N4>

The composite video signal output from the pin (17) of IC101 passes through Q131 and Q132, and it is supplied to pin (8) as the luminance (Y) signal, to pin (4) as the chroma signal.

The luminance signal input to the pin (8) is applied to the luminance amplifier and contrast control circuit, gain control (contrast) is applied by the pin (6) DC voltage, and this signal is then input to the matrix circuit. The DC level of the luminance signal can be varied (brightness) by the DC voltage of pin(11). The chroma signal input to pin (4) passes through the chroma amplifier, saturation control, contrast control, and output amplifier circuit, and it is output to pin (28). The chroma signal output to pin (28) is input to the 1H delay line circuit, and is divided into R-Y and B-Y chroma signals, which are input to pin (23) and pin (22) respectively. The R-Y chroma signal input to pin (23) is detected by the CW signal which has a phase inversion of 180° every 1H at the PAL switching circuit, and is then taken out to B-matrix circuit as B-Y demodulated output. The R-Y and B-Y demodulated output are matrixed G-Y matrix circuit, and G-Y demodulated output taken out to G-matrix circuit.

The each R.G.B. matrix circuits are mixed the luminance signal and each R-Y, G-Y and B-Y demodulated output to obtain the red, green and blue primary colour signals, and is applied the each R.G.B. amplifier circuits. The signal passes through the R.G.B. amplifier circuit added to the blanking pulse which is input to pin (9), and output to pin (13) as red signal, to pin (15) as green signal, to pin (17) as blue signal.

The reference oscillator operates at twice the subcarrier frequency and is phase and frequency controlled by the frequency burst phase of the chroma signal. The oscillator can be adjusted via the voltage of the phase detector output (pin (23)).

VERTICAL OUTPUT

An IC (LA7830) is used for the vertical output circuit in this chassis. The vertical drive pulse from pin (3) of IC101 is input to pin (4) of IC431. This pulse drives IC431, and vertical scanning is performed. In the first half of scanning a deflecting current is output from pin (2) and passes through the following path: $V_{cc24V} \rightarrow D431 \rightarrow \text{pin}(3) \rightarrow \text{pin}(2) \rightarrow DY \rightarrow C435 \rightarrow VR431/R433$. An electric charge is then stored in C435. In the last half of scanning the current path is $C435 \rightarrow DY \rightarrow \text{pin}(2) \rightarrow \text{pin}(1) \rightarrow VR431/R433 \rightarrow C435$. In this way, an amplifying sawtooth waveform current flows directly to DY to perform electron beam deflection. Next, in the first half of the blanking period the vertical drive pulse suddenly becomes OFF, and in order to reduce the current flowing to DY, the current path becomes as follows by the inductance of DY: $DY \rightarrow \text{pin}(2) \rightarrow \text{pin}(1) \rightarrow VR431/R433 \rightarrow C431 \rightarrow DY$. Also, when the charge of DY has dissipated, the current path becomes $V_{cc24V} \rightarrow \text{pin}(6) \rightarrow \text{pin}(7) \rightarrow C437 \rightarrow \text{pin}(3) \rightarrow \text{pin}(2) \rightarrow DY \rightarrow C435 \rightarrow VR431/R433$, and when the prescribed current value is reached, the vertical drive pulse becomes ON. This completes one cycle.

HORIZONTAL OUTPUT

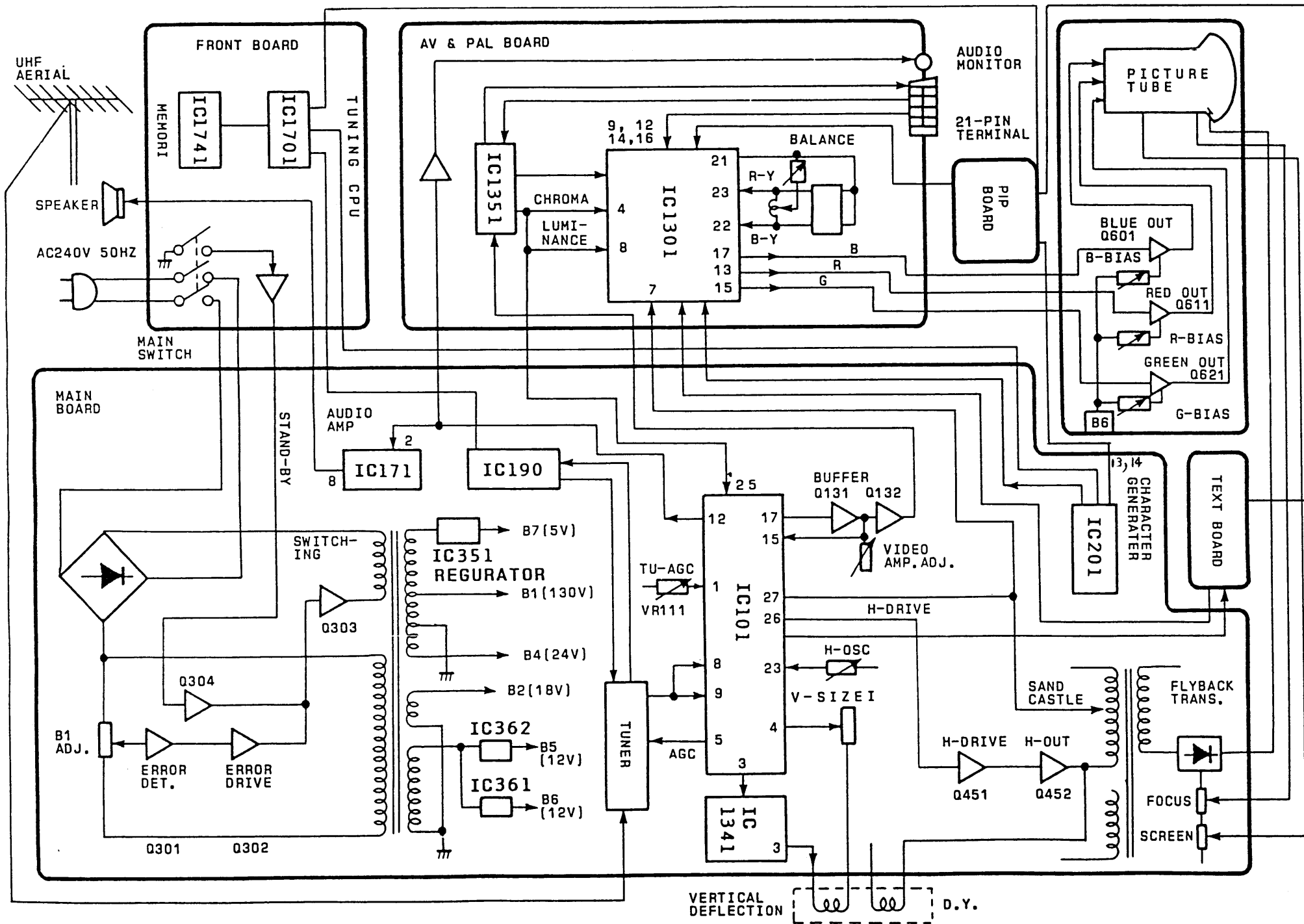
A horizontal oscillation signal is output from pin (26) of IC101 and switches the drive transistor Q451. This switching signal is current amplified by the drive transformer T451 and drives the output transistor Q452. When Q452 becomes ON, an amplifying current flows directly to DY through $C443 \rightarrow L442/R442 \rightarrow DY \rightarrow Q452 \rightarrow GND$, and deflection is performed in the last half of the scanning period.

Next, when Q452 becomes OFF, the charge that had been stored in DY up to that point releases a resonance current to the resonant capacitors C457 and C458 and charges them. The current stored in C457 and C458 is then flowed back to DY, and an opposite charge is then stored in DY. This opposite charge then switches the dumper diode in Q452 ON, the resonance state is completed, and an amplifying current is then flowed again directly to DY through the dumper diode. By this means, deflection in the first half of the scanning period is performed, and when Q452 becomes ON at the end of the first half of the scanning period, deflection during the last half is begun, thus completing one cycle.

HIGH VOLTAGE

The 1000-Vpp blanking pulse generated in the primary coil of the flyback transformer T471 is boosted 10 - 15 times, and a stable high-voltage pulse superposed with harmonics nine times the fundamental harmonics is generated. This is made into a 20-30kV DC voltage by using a double-voltage rectifier circuit. Furthermore, the intermediate frequency of the double-voltage rectifier circuit is resistance potential divided and used as the focus and screen voltages for the CRT. This resistance for potential division is unified in the flyback transformer.

Moreover, the accompanying coils are used to generate the +15V, -40V, heater voltage, and AFT pulse.

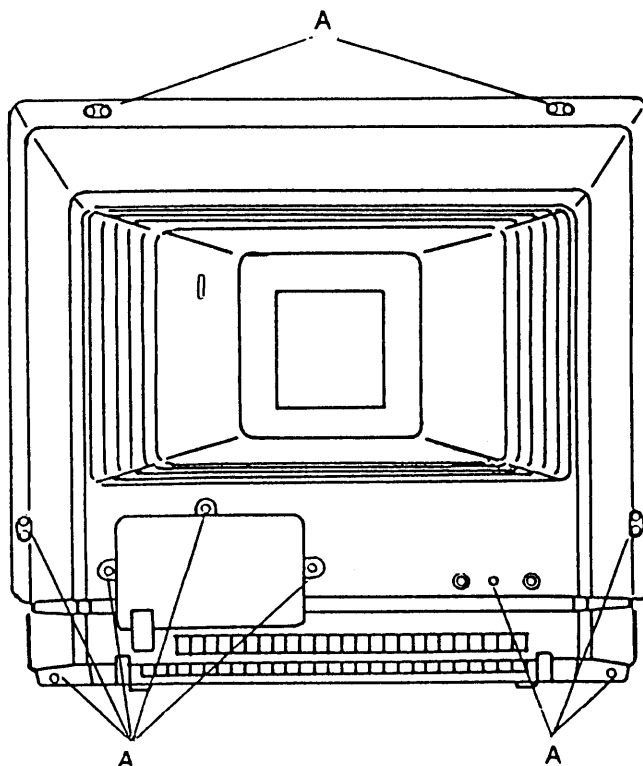


BLOCK DIAGRAM

DI SASSEMBLY

CABINET BACK REMOVAL

Remove 10 screws (A).
Then draw off the cabinet back.



PICTURE TUBE REMOVAL

Caution:

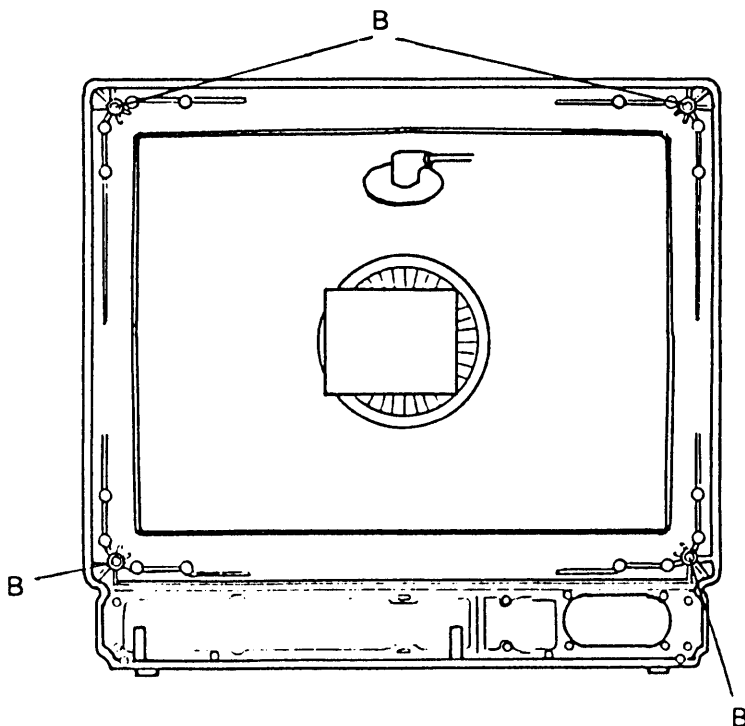
Do not disturb the deflection yoke assembly on CRT neck. Care must be taken to keep these assemblies intact. Discharge picture tube by shorting the anode connection to chassis ground. (Not cabinet or other mounting parts.)

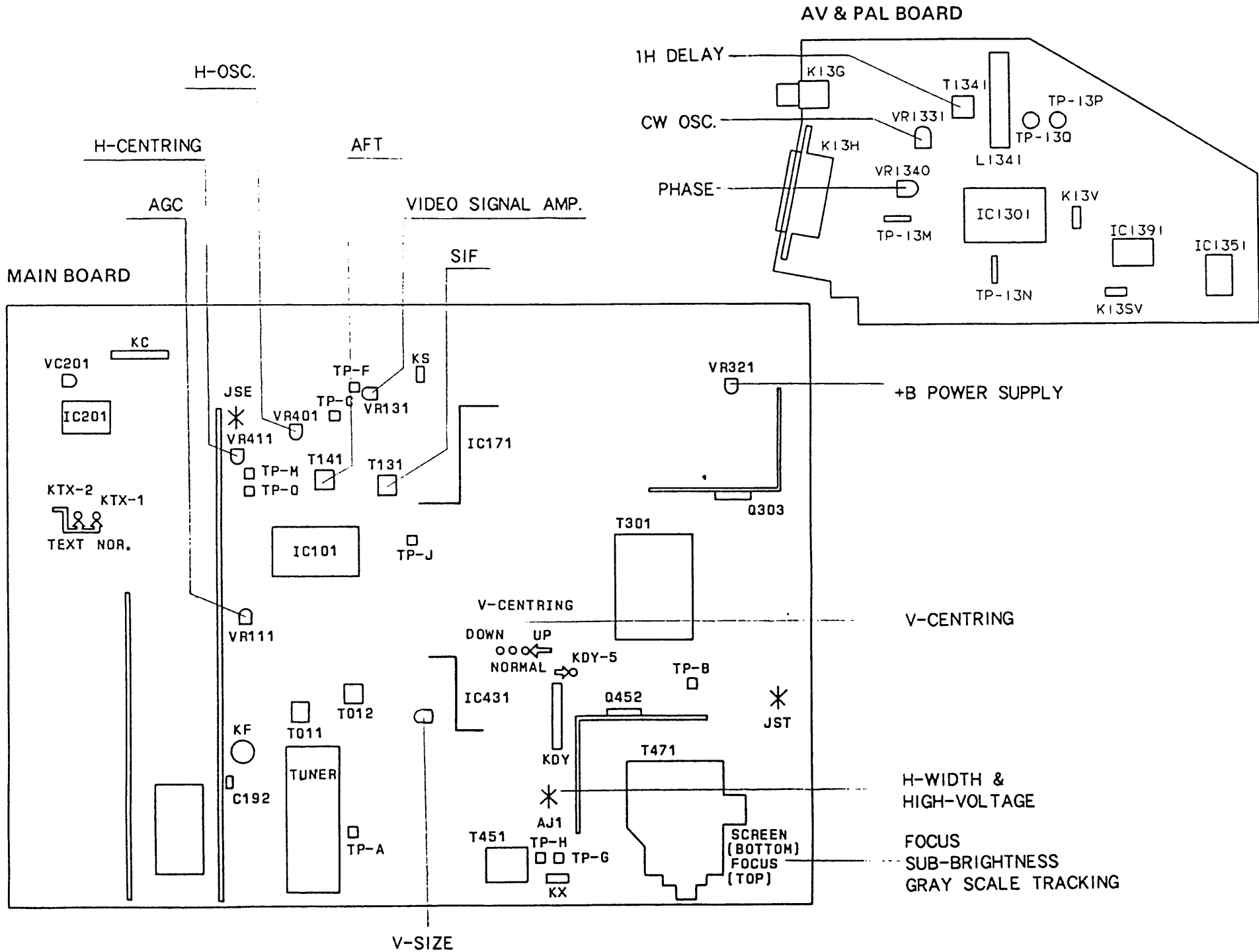
Remove the cabinet back and chassis.

Place the cabinet face down on a soft surface.
Remove 4 screws (B).

Gently lift out the picture tube and place it on a soft surface.

Install replacement picture tube in reverse order.





ADJUSTMENTS POINTS

CIRCUIT ALIGNMENT

[VIF ALIGNMENT]

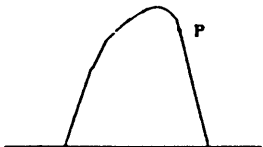
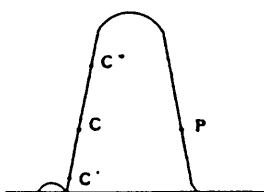
		DETECTOR ADJ.	OVERALL WAVEFORM
S E T I N G	DC 12V AGC voltage input probe output probe Tuning voltage Damping R System SW Band Sweep ATT	TP-M TP-C R135 Tuner-TP b-side Tuner-TU _____ I UB 10	TP-M TP-C R135 Tuner-TP b-side Tuner-TU R141 I UB 10
Adjustment		By using T141, adjust "P" to be maximum amplitude.	By using Tuner-converter coil and T011, make the marker positions to P=35±10% C=35±10%
VIF waveform			

Fig.1 Input probe

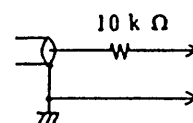


Fig.2 Output probe

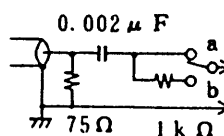
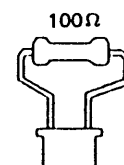
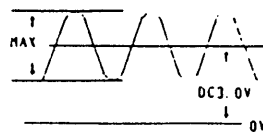
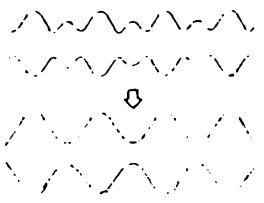


Fig.3 Damping R
100 ohm



[SIF ALIGNMENT]

		SIF-1	SIF-2
S E T I N G	Digital V-meter Oscilloscope Triggered TP-J Channel carrier modulation deviation	TP-J TP-J 6.0 MHz 400 Hz or 1 KHz ±30 KHz	_____ C131 6.0 MHz 400 Hz or 1 KHz ±30 KHz
Adjustment		By using T151, adjust waveform to be maximum and DC voltage to be 3.0 ± 0.2V	By using T131, adjust waveform to be maximum.
SIF waveform			

SERVICE CONTROL ADJUSTMENTS

B-VOLTAGE ADJUSTMENT

1. Set VR321 to be the mechanical center before pressing the main switch.
2. Tune the receiver to the PAL circular pattern.
3. Set brightness and contrast controls to the normal.
4. Connect the digital V-meter to the test point "TP-B".
5. By using VR301, adjust voltage to 130 ± 0.5 V.

Circular Pattern

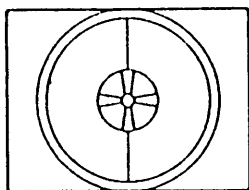


Fig.4

TU-AGC ADJUSTMENT

1. Tune the receiver to the clearest station.
2. Connect the digital V-meter to the test point "TP-A".
3. By using VR111, adjust voltage to 6.2 ± 0.2 V.

HORIZONTAL OSCILLATION ADJUSTMENT

1. Tune the receiver to the PAL colour bar pattern.
2. Pull out the KTX tip.
3. By using VR401, adjust the test pattern to be standstill.
4. Put into the KTX tip.

PAL Color Bar Pattern

White	Yellow	Cyan	Green	Magenta	Red	Blue	Upper
V	+ U	Grey	White	Black			Lower

Fig.5

DET-OUT ADJUSTMENT

1. Tune the receiver to the PAL colour bar pattern.
2. Set brightness and contrast controls to the normal.
3. Connect the oscilloscope to the test point "TP-F".
4. By using VR131, adjust waveform to be 1.0 ± 0.02 V_{P-P}.

PAL COLOUR ADJUSTMENTS

[CW OSC ADJUSTMENT]

1. Tune the receiver to the PAL colour bar pattern.
(or the philips pattern)
2. Set brightness, contrast and colour controls to the normal.
3. Turn VR1331 fully counter-clockwise.
4. Connect the short clip between test points "TP-13P" and "TP-13Q", "TP-13M" and "TP-13N".
5. By turning VR1311 clockwise, adjust colour synchronization to be standstill.

[1H DELAY ADJUSTMENT]

3. Connect the oscilloscope to test points (+) "TP-6B" and (-) "TP-6E".
4. By using T1341, adjust "a" to be minimum.

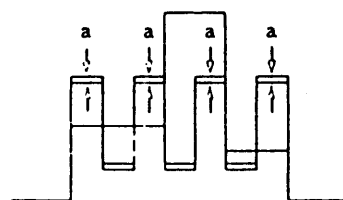


Fig.6

[COLOUR PHASE ADJUSTMENT]

3. Connect the oscilloscope to test points (+) "TP-6B" and (-) "TP-6E".
4. By using T1340, adjust "b" to be minimum.

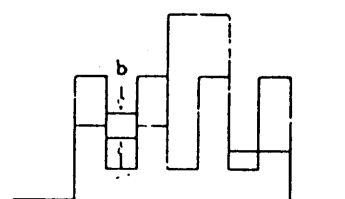


Fig.7

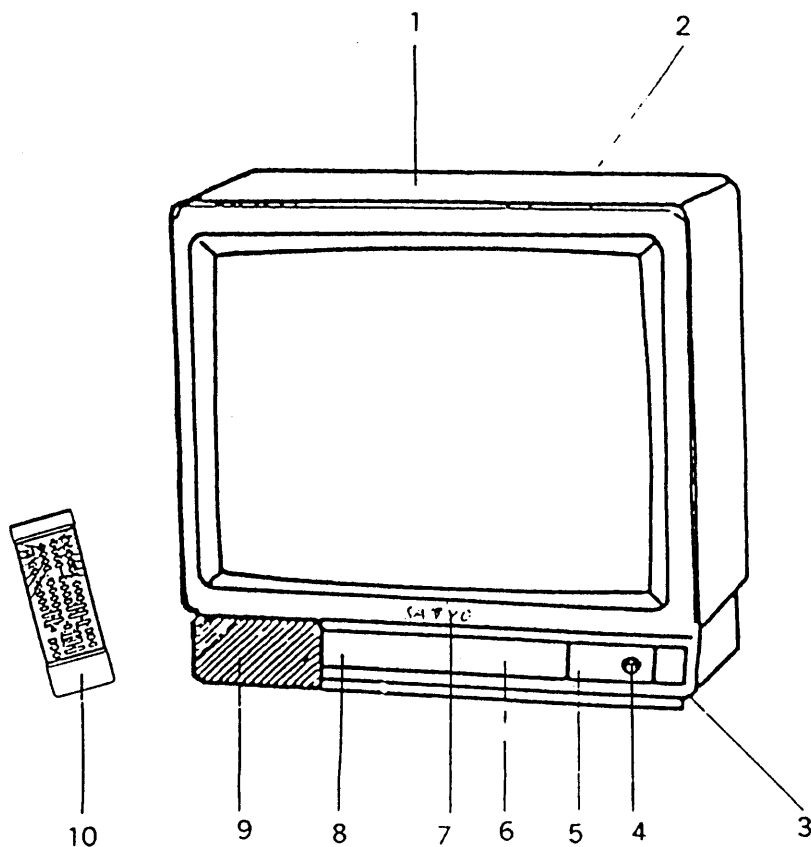
GREY SCALE ADJUSTMENT

[SCREEN VR ADJUSTMENT]

1. Tune the receiver to the black and white pattern.
2. Set brightness and contrast controls to the normal.
3. Pull out K13V and KDY-5 tips.
4. Set VR601, VR611 to be the mechanical center.
5. Turn VR602, VR612, VR622 fully counter-clockwise.
6. Set the screen VR for one colour to be just visible.

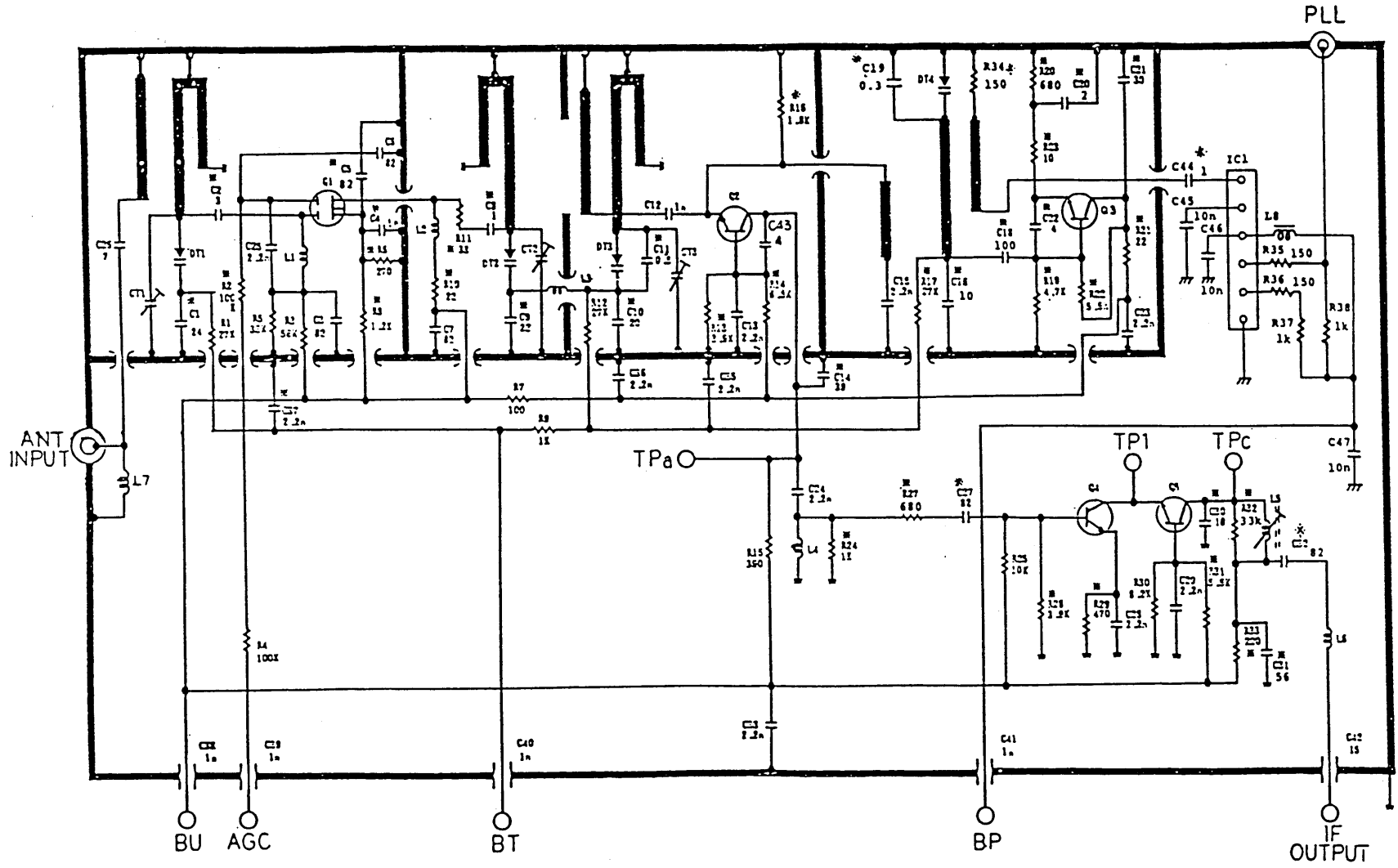
CABINET PARTS LIST

Note: Parts order must contain Service Ref.No.,Key No.,Part No. and Description.



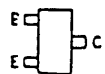
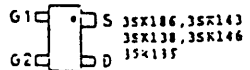
Key No.	Part No.	Description
1.	610 060 4537	Cabinet Ass'y
2.	610 105 3945	Cabinet back
3.	610 105 4263	Front panel
4.	610 105 4300	Button; Main SW
5.	610 105 4294	Indicator plate
6.	610 205 6679	Control indicate sheet
7.	610 203 2260	Badge ; SANYO
8.	610 205 6594	Door <i>66-5303</i>
9.	610 081 9818	Speaker grille
10.	610 205 4491	RC transmitter

TUNER CIRCUIT DIAGRAM



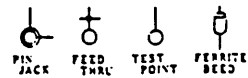
TF0007EA

TRANSISTOR PIN CONNECTION



- 25C1077, 25C3545
- 25C2758, 25C3120
- 25C1130, 25C2734
- 25C3793, 25C2759
- 25C2757, 25C3127
- 25C2404, 25C2733
- 25C2735, 25C2430
- 25C3125, 25C3567

SYMBOL NAME



■ This numerical value is not fixed.

CHASSIS ELECTRICAL PARTS LIST

PRODUCT SAFETY NOTICE

PRODUCT SAFETY SHOULD BE CONSIDERED WHEN A COMPONENT REPLACEMENT IS MADE IN ANY AREA OF A RECEIVER COMPONENTS INDICATED BY A MARK Δ IN THIS PARTS LIST AND THE CIRCUIT DIAGRAM SHOW COMPONENTS WHOSE VALUE HAVE SPECIAL SIGNIFICANCE TO PRODUCT SAFETY. IT IS PARTICULARLY RECOMMENDED THAT ONLY PARTS SPECIFIED ON THE FOLLOWING PARTS LIST BE USED FOR COMPONENTS REPLACEMENT POINTED OUT BY THE MARK.

NOTE: Part order must contain Model No., Ref. No., Part No. and Description

Ref. No.	Part No.	Description	Ref. No.	Part No.	Description
610 205 7539 (MAIN UNIT D8PD)					
TRANSISTORS					
Q011	405 013 3305	TR 2SC2216(SAN)	C013	403 011 3808	CERAMIC 120P J 50V
Q131	405 019 2708	TR 2SC536-F-NP	C014	403 069 8305	CERAMIC 0.01U Z 50V
	OR 405 019 3804	TR 2SC536-G-NP	C017	403 069 8305	CERAMIC 0.01U Z 50V
Q132	405 004 4205	TR 2SA608-E-CTV-NP	C018	403 069 8305	CERAMIC 0.01U Z 50V
	OR 405 004 4809	TR 2SA608-F-CTV-NP	C101	403 069 8305	CERAMIC 0.01U Z 50V
Q152	405 004 4809	TR 2SA608-F-CTV-NP	C103	403 008 5501	CERAMIC 10P D 50V
	OR 405 004 4205	TR 2SA608-E-CTV-NP	C111	403 072 2604	CERAMIC 0.022U Z 50V
Q161	405 019 3804	TR 2SC536-G-NP	C112	403 042 4805	ELECT 1000U M 16V
	OR 405 019 2708	TR 2SC536-F-NP	C113	403 070 8400	CERAMIC 1500P K 50V
Q181	405 019 3804	TR 2SC536-G-NP	C114	403 067 6709	MT-COMPO 0.22U J 50V
	OR 405 019 2708	TR 2SC536-F-NP	C115	403 067 7805	MT-COMPO 0.47U J 50V
Q182	405 019 2708	TR 2SC536-F-NP	C119	403 069 8305	CERAMIC 0.01U Z 50V
	OR 405 019 3804	TR 2SC536-G-NP	C121	403 069 0507	CERAMIC 1000P K 50V
Q183	405 019 3804	TR 2SC536-G-NP	C122	403 042 2405	ELECT 100U M 16V
	OR 405 019 2708	TR 2SC536-F-NP	C123	403 067 6709	MT-COMPO 0.22U J 50V
Q184	405 019 2708	TR 2SC536-F-NP	C125	403 051 0607	ELECT 4.7U M 50V
	OR 405 019 3804	TR 2SC536-G-NP	C126	403 069 8305	CERAMIC 0.01U Z 50V
Q221	405 019 2708	TR 2SC536-F-NP	C129	403 041 2109	ELECT 47U M 10V
	OR 405 019 3804	TR 2SC536-G-NP	C131	403 069 8305	CERAMIC 0.01U Z 50V
Q222	405 019 2708	TR 2SC536-F-NP	C132	403 018 6307	CERAMIC 220P J 50V
	OR 405 019 3804	TR 2SC536-G-NP	C133	403 028 2009	CERAMIC 56P J 50V
Q223	405 019 3804	TR 2SC536-G-NP	C134	403 028 2009	CERAMIC 56P J 50V
	OR 405 019 2708	TR 2SC536-F-NP	C138	403 049 0008	ELECT 1U M 50V
Q242	405 019 3804	TR 2SC536-G-NP	C141	403 028 2009	CERAMIC 56P J 50V
	OR 405 019 2708	TR 2SC536-F-NP	C151	403 026 1301	CERAMIC 47P J 50V
Q301	405 004 4809	TR 2SA608-F-CTV-NP	C152	403 069 8305	CERAMIC 0.01U Z 50V
	OR 405 004 4205	TR 2SA608-E-CTV-NP	C153	403 067 5603	MT-COMPO 0.1U J 50V
Q302	405 058 0208	TR 2SC3807-R-CTV-YA	C154	403 042 7707	ELECT 22U M 16V
Q303	405 022 8506	TR 2SD1710-CTV-YB	C155	403 058 3205	POLYESTER 0.015U K 50V
Q304	405 039 8001	TR 2SD1246-U	C156	403 049 9803	ELECT 2.2U M 50V
	OR 405 022 0005	TR 2SD1246-T	C169	403 042 7707	ELECT 22U M 16V
Q451	405 011 1907	TR 2SC1627-Y	C170	403 051 0607	ELECT 4.7U M 50V
	OR 405 011 1808	TR 2SC1627-O	C171	403 042 2405	ELECT 100U M 16V
	OR 405 013 6801	TR 2SC2274-E	C172	403 067 7805	MT-COMPO 0.47U J 50V
	OR 405 013 7006	TR 2SC2274-F	C173	403 072 5308	CERAMIC 2700P K 50V
Q452	405 022 6700	TR 2SD1650-CTV-YB	C174	403 045 7803	ELECT 220U M 25V
INTEGRATED CIRCUITS			C175	403 067 5603	MT-COMPO 0.1U J 50V
IC101	410 044 4504	IC TDA4505M <i>41-4508</i>	C176	403 067 5603	MT-COMPO 0.1U J 50V
IC171	409 073 1509	IC AN5265	C177	403 045 1603	ELECT 1000U M 25V
IC190	410 019 6205	IC SA83035	C178	403 041 8804	ELECT 10U M 16V
IC201	409 108 0200	IC UPD6140C-001	C179	403 041 8804	ELECT 10U M 16V
IC351	409 026 8609	IC L78M05-RA	C185	403 069 8305	CERAMIC 0.01U Z 50V
IC361	409 026 9507	IC L78M12-RA	C190	403 022 5907	CERAMIC 33P J 50V
IC362	409 026 9507	IC L78M12-RA	C191	403 069 8305	CERAMIC 0.01U Z 50V
IC391	409 026 8609	IC L78M05-RA	C192	403 074 2602	CERAMIC 0.047U Z 50V
IC431	409 019 5608	IC LA7830	C193	403 043 9106	ELECT 47U M 16V
CAPACITORS			C194	403 067 5702	MT-COMPO 1U J 50V
C011	403 030 5401	CERAMIC 68P J 50V	C195	403 069 8305	CERAMIC 0.01U Z 50V
C012	403 024 0009	CERAMIC 39P J 50V	C198	403 043 9106	ELECT 47U M 16V
			C201	403 043 9106	ELECT 47U M 16V
			C202	403 069 8305	CERAMIC 0.01U Z 50V
			C203	403 019 7709	CERAMIC 27P J 50V
			C242	403 059 5000	POLYESTER 0.022U J 50V
			OR 403 059 5703	POLYESTER 0.022U J 50V	
			Δ C300	404 039 7601	MT-COMPO 0.1U K 250V
			C302	403 076 7100	CERAMIC 1000P M 1K
			C303	403 076 7100	CERAMIC 1000P M 1K
			C304	403 076 7100	CERAMIC 1000P M 1K

Ref. No.	Part No.	Description
C305	403 076 7100	CERAMIC 1000P M 1K
C306	404 032 1705	ELECT 150U M 385V
	OR 404 038 2607	ELECT 150U A 385V
C307	403 054 9003	ELECT 4.7U M 100V
C310	403 077 2005	CERAMIC 1000P K 2K
	OR 403 077 2302	CERAMIC 1000P K 2K
C311	403 069 0507	CERAMIC 1000P K 50V
C312	403 067 7706	MT-COMPO 0.047U J 50V
C313	403 057 0403	POLYESTER 0.01U K 50V
△C340	404 008 3108	CERAMIC 470P M 400V
△C342	404 008 3108	CERAMIC 470P M 400V
C344	404 003 9808	ELECT 220U M 160V
C345	403 077 7505	CERAMIC 470P K 2K
	OR 403 077 7901	CERAMIC 470P K 2K
C352	403 042 4805	ELECT 1000U M 16V
C354	403 043 9106	ELECT 47U M 16V
C355	403 041 4509	ELECT 470U M 10V
C361	403 077 0100	CERAMIC 470P K 1K
	OR 403 077 0407	CERAMIC 470P K 1K
C362	403 045 1603	ELECT 1000U M 25V
C363	403 043 2008	ELECT 2200U M 16V
C366	403 043 9106	ELECT 47U M 16V
C372	403 053 3606	ELECT 2200U M 35V
C382	403 045 9807	ELECT 2200U M 25V
C383	403 045 1603	ELECT 1000U M 25V
C391	403 054 1502	ELECT 470U M 35V
C392	403 041 4509	ELECT 470U M 10V
C393	403 043 1902	ELECT 2200U M 16V
C400	403 070 7403	CERAMIC 150P K 50V
C401	403 095 0403	COMPO-FILM 2700P J 50V
C402	403 067 6709	MT-COMPO 0.22U J 50V
C403	403 051 0607	ELECT 4.7U M 50V
C404	403 067 8208	MT-COMPO 0.068U J 50V
C411	403 067 6204	MT-COMPO 0.15U J 50V
C412	403 067 5603	MT-COMPO 0.1U J 50V
C430	403 071 7402	CERAMIC 2200P K 50V
C432	403 074 5702	CERAMIC 560P K 50V
C433	403 049 4204	ELECT 10U M 50V
C434	403 069 8305	CERAMIC 0.01U Z 50V
C435	403 045 9807	ELECT 2200U M 25V
C436	403 067 5603	MT-COMPO 0.1U J 50V
C437	403 053 2104	ELECT 220U M 35V
C438	403 065 9405	MT-POLYEST 0.15U K 100V
C439	403 023 9706	CERAMIC 39P J 50V
C441	403 082 8009	POLYPRO 0.2U J 200V
C442	403 082 7408	POLYPRO 0.15U J 200V
C443	403 082 8405	POLYPRO 0.22U J 200V
C452	403 075 7101	CERAMIC 1000P K 500V
C453	403 076 3102	CERAMIC 3900P K 500V
C455	403 047 3100	ELECT 47U M 25V
C456	403 078 4404	CERAMIC 390P K 3K
	OR 403 078 4701	CERAMIC 390P K 3K
△C457	404 030 6900	MT-POLYPRO 6000P J 1.5K
	OR 404 030 7006	MT-POLYPRO 6000P J 1.5K
C458	403 078 5104	CERAMIC 470P K 3K
	OR 403 078 5401	CERAMIC 470P K 3K
C459	403 076 1405	CERAMIC 2700P K 500V
C475	403 067 7805	MT-COMPO 0.47U J 50V
C478	403 055 8906	ELECT 22U T 250V
C481	403 066 6106	MT-POLYEST 0.47U J 250V
C491	403 043 9106	ELECT 47U M 16V
RESISTORS		
R011	401 016 3809	CARBON 2.2K JA 1/4W
R012	401 012 4503	CARBON 100 JA 1/4W
R013	401 022 3107	CARBON 6.8K JA 1/4W
R014	401 012 5708	CARBON 1K JA 1/4W
R016	401 016 2604	CARBON 220 JA 1/4W
R017	401 018 1605	CARBON 33 JA 1/4W
R101	401 022 1905	CARBON 680 JA 1/4W
R110	401 013 6407	CARBON 12K JA 1/4W
R111	401 022 3107	CARBON 6.8K JA 1/4W
R114	401 014 7205	CARBON 1.5M JA 1/4W

Ref. No.	Part No.	Description
R121	401 013 6407	CARBON 12K JA 1/4W
R123	401 019 9600	CARBON 47 JA 1/4W
R127	401 065 8503	OXIDE-MT 15K JA 2W
R131	401 020 0801	CARBON 470 JA 1/4W
R132	401 016 3809	CARBON 2.2K JA 1/4W
R133	401 017 0807	CARBON 270 JA 1/4W
R134	401 020 0801	CARBON 470 JA 1/4W
R135	401 012 5708	CARBON 1K JA 1/4W
R136	401 016 4806	CARBON 22K JA 1/4W
R137	401 012 5708	CARBON 1K JA 1/4W
R138	401 022 5101	CARBON 680K JA 1/4W
R141	401 018 3807	CARBON 3.3K JA 1/4W
R142	401 018 5801	CARBON 330K JA 1/4W
R151	401 019 1901	CARBON 3.9K JA 1/4W
R152	401 020 2003	CARBON 4.7K JA 1/4W
R155	401 012 7009	CARBON 10K JA 1/4W
R157	401 016 4806	CARBON 22K JA 1/4W
R158	401 016 4806	CARBON 22K JA 1/4W
R159	401 012 5708	CARBON 1K JA 1/4W
R161	401 013 7008	CARBON 120K GA 1/4W
R162	401 014 4808	CARBON 15K GA 1/4W
R163	401 023 1300	CARBON 820 GA 1/4W
R164	401 012 4503	CARBON 100 JA 1/4W
R171	401 012 5708	CARBON 1K JA 1/4W
R172	401 017 6205	CARBON 3.3 JA 1/4W
R173	401 018 1605	CARBON 33 JA 1/4W
R175	401 014 4105	CARBON 1.5K JA 1/4W
R176	401 017 2801	CARBON 27K JA 1/4W
R178	401 012 5708	CARBON 1K JA 1/4W
R179	401 016 4806	CARBON 22K JA 1/4W
R180	401 018 4903	CARBON 33K JA 1/4W
R181	401 023 3700	CARBON 82K JA 1/4W
R182	401 023 3700	CARBON 82K JA 1/4W
R183	401 023 3700	CARBON 82K JA 1/4W
R185	401 016 4806	CARBON 22K JA 1/4W
R186	401 012 5708	CARBON 1K JA 1/4W
R187	401 012 7009	CARBON 10K JA 1/4W
R189	401 012 7009	CARBON 10K JA 1/4W
R192	401 020 2003	CARBON 4.7K JA 1/4W
R193	401 020 2904	CARBON 47K JA 1/4W
R194	401 018 3807	CARBON 3.3K JA 1/4W
R195	401 017 0807	CARBON 270 JA 1/4W
R196	401 023 2802	CARBON 8.2K JA 1/4W
R197	401 017 0807	CARBON 270 JA 1/4W
R221	401 020 2003	CARBON 4.7K JA 1/4W
R222	401 017 1804	CARBON 2.7K JA 1/4W
R223	401 012 7009	CARBON 10K JA 1/4W
R228	401 016 3809	CARBON 2.2K JA 1/4W
R229	401 022 6801	CARBON 75 JA 1/4W
R230	401 023 0709	CARBON 82 JA 1/4W
R241	401 012 8105	CARBON 100K JA 1/4W
R245	401 012 7009	CARBON 10K JA 1/4W
R246	401 016 3809	CARBON 2.2K JA 1/4W
R247	401 017 1804	CARBON 2.7K JA 1/4W
R301	401 008 8607	CARBON 220K JA 1/2W
R302	402 034 6308	WIRE WOUND 3.9 KA 6W
R303	401 016 3809	CARBON 2.2K JA 1/4W
R304	401 014 5201	CARBON 15K JA 1/4W
R305	401 021 4105	CARBON 56K JA 1/4W
R306	401 012 7009	CARBON 10K JA 1/4W
R308	401 007 5805	CARBON 120K JA 1/2W
R309	401 007 5805	CARBON 120K JA 1/2W
R310	401 014 5201	CARBON 15K JA 1/4W
R311	401 067 8204	OXIDE-MT 39 JA 2W
R312	401 012 4503	CARBON 100 JA 1/4W
R313	401 012 7009	CARBON 10K JA 1/4W
R314	401 012 5708	CARBON 1K JA 1/4W
R315	401 019 1901	CARBON 3.9K JA 1/4W
R316	401 018 3807	CARBON 3.3K JA 1/4W
R317	401 014 2903	CARBON 150 JA 1/4W
R318	401 021 3009	CARBON 5.6K JA 1/4W
R319	401 066 5204	OXIDE-MT 22 JA 2W
△R340	402 000 8305	SOLID 5.6M KA 1/2W
△R341	402 000 8305	SOLID 5.6M KA 1/2W
R351	401 057 9105	OXIDE-MT 1.2 JA 1W

Ref. No.	Part No.	Description
R363	401 065 9609	OXIDE-HT 18 JA 2W
R365	401 065 9609	OXIDE-HT 18 JA 2W
R381	401 059 9608	OXIDE-HT 2.2 JA 1W
R391	402 012 6801	WIRE WOUND 47 KA 6W
R401	401 017 2801	CARBON 27K JA 1/4W
R402	401 023 3700	CARBON 82K JA 1/4W
R403	401 012 5708	CARBON 1K JA 1/4W
R404	401 016 3809	CARBON 2.2K JA 1/4W
R413	401 019 3004	CARBON 39K JA 1/4W
R414	401 021 4105	CARBON 56K JA 1/4W
R421	401 019 3004	CARBON 39K JA 1/4W
R431	401 019 3004	CARBON 39K JA 1/4W
R432	401 014 5201	CARBON 15K JA 1/4W
R433	401 006 8104	CARBON 1.2 JA 1/2W
R434	401 007 1104	CARBON 1K JA 1/2W
R435	401 020 0801	CARBON 470 JA 1/4W
R436	401 021 3009	CARBON 5.6K JA 1/4W
R438	401 008 6702	CARBON 220 JA 1/2W
R439	401 020 2003	CARBON 4.7K JA 1/4W
R442	401 007 1203	CARBON 1K JB 1/2W
R443	401 008 0908	CARBON 180 JA 1/2W
R450	401 019 3004	CARBON 39K JA 1/4W
R452	401 021 3009	CARBON 5.6K JA 1/4W
R454	401 018 2800	CARBON 330 JA 1/4W
R455	401 012 5708	CARBON 1K JA 1/4W
R456	401 009 0907	CARBON 270 JA 1/2W
R457	401 012 4503	CARBON 100 JA 1/4W
R472	401 018 4903	CARBON 33K JA 1/4W
R473	401 020 2904	CARBON 47K JA 1/4W
R474	401 015 4708	CARBON 180K JA 1/4W
△R475	401 001 6808	SOLID 2.7K KA 1/2W
R476	401 012 5708	CARBON 1K JA 1/4W
R477	401 022 4104	CARBON 68K JA 1/4W
△R478	402 001 8502	FUSIBLE RES 10 J- 1/2W
R479	401 018 5801	CARBON 330K JA 1/4W
R481	402 012 4302	WIRE WOUND 10 KA 6W
R491	401 012 5708	CARBON 1K JA 1/4W
R492	401 019 9600	CARBON 47 JA 1/4W
VARIABLE RESISTORS		
VR111	610 019 3932	VARIABLE RESISTOR B-50K
	OR 610 019 2607	VR B-50K
VR131	610 019 3895	VARIABLE RESISTOR B-5K
	OR 610 019 2577	VR B-5K
△VR321	610 019 3864	VARIABLE RESISTOR B-1K
	OR 610 019 2560	VR B-1K
VR401	610 018 9706	VR B-10K
	OR 610 018 9720	VR B-10K
	OR 610 018 9713	VR B-10K
VR411	610 019 3932	VARIABLE RESISTOR B-50K
	OR 610 019 2607	VR B-50K
VR431	610 019 3826	VARIABLE RESISTOR B-100
TRANSFORMERS		
T011	610 037 5727	S TRANS
T101	610 037 7646	S TRANS
T131	610 205 3067	S TRANS
T141	610 037 4522	S COIL
T151	610 037 5338	S COIL
△T301	610 000 2814	CONVERTER TRANS
T391	610 033 3840	POWER TRANS
T451	610 000 1060	DRIVE TRANS
	OR 610 000 1053	DRIVE TRANS
△T471	610 018 0260	FBT
COILS		
L131	610 029 6060	PEAKING COIL 18UH K
L191	610 029 6466	PEAKING COIL 8.2UH K
L192	610 029 6466	PEAKING COIL 8.2UH K

Ref. No.	Part No.	Description
L201	610 029 5926	PEAKING COIL 10UH K
L202	610 029 6343	PEAKING COIL 47UH K
△L301	610 031 5945	LINE FILTER
	OR 610 031 5976	LINE FILTER
△L302	610 031 5945	LINE FILTER
	OR 610 031 5976	LINE FILTER
L303	610 078 5946	PIPE CORE
L431	610 029 5940	PEAKING COIL 100UH K
L442	610 000 0605	LINEARITY COIL
L443	610 032 0703	INDUCTOR
L452	610 078 4635	PIPECORE
DIODES		
D152	408 007 8607	DIODE 1N4148
	OR 407 013 1206	DIODE 1S1555
D161	407 048 4203	ZENER DIODE EQA02-08B
D171	408 007 8607	DIODE 1N4148
	OR 407 013 1206	DIODE 1S1555
D181	408 007 8607	DIODE 1N4148
	OR 407 013 1206	DIODE 1S1555
D182	408 007 8607	DIODE 1N4148
	OR 407 013 1206	DIODE 1S1555
D183	408 007 8607	DIODE 1N4148
	OR 407 013 1206	DIODE 1S1555
D184	408 007 8607	DIODE 1N4148
	OR 407 013 1206	DIODE 1S1555
D194	408 007 8607	DIODE 1N4148
	OR 407 013 1206	DIODE 1S1555
D302	407 006 6300	DIODE ERC05-10B
	OR 407 009 6901	DIODE RM11C
	OR 407 064 6908	DIODE TVR4N(X)
D303	407 006 6300	DIODE ERC05-10B
	OR 407 009 6901	DIODE RM11C
	OR 407 064 6908	DIODE TVR4N(X)
D304	407 006 6300	DIODE ERC05-10B
	OR 407 009 6901	DIODE RM11C
	OR 407 064 6908	DIODE TVR4N(X)
D305	407 006 6300	DIODE ERC05-10B
	OR 407 009 6901	DIODE RM11C
	OR 407 064 6908	DIODE TVR4N(X)
D306	407 007 7405	DIODE EU1
D307	407 048 2407	ZENER DIODE EQA02-06E
D310	407 013 1008	DIODE 1S1553
	OR 407 013 4306	DIODE 1S2076A
	OR 407 013 6508	DIODE 1S2471
D313	407 007 6606	DIODE ES1
D314	407 013 1008	DIODE 1S1553
	OR 407 013 4306	DIODE 1S2076A
	OR 407 013 6508	DIODE 1S2471
D315	407 048 3503	ZENER DIODE EQA02-07C
	OR 407 048 3701	ZENER DIODE EQA02-07D
△D331	408 007 8706	PHOTO COUPLE CNY75B
	OR 408 007 7303	PHOTO COUPLE CNY75C
D341	407 007 7702	DIODE EU2A
D351	407 009 8608	DIODE RU3
D352	408 007 8607	DIODE 1N4148
	OR 407 013 1206	DIODE 1S1555
D353	408 007 8607	DIODE 1N4148
	OR 407 013 1206	DIODE 1S1555
D361	407 009 8905	DIODE RU3M
D363	408 007 8607	DIODE 1N4148
	OR 407 013 1206	DIODE 1S1555
D371	408 007 2506	DIODE BYW32
	OR 407 007 7603	DIODE EU2
D381	408 007 2506	DIODE BYW32
	OR 407 007 7603	DIODE EU2
D382	408 007 8607	DIODE 1N4148
	OR 407 013 1206	DIODE 1S1555
D391	407 009 2002	DIODE RB-151
D421	408 007 8607	DIODE 1N4148
	OR 407 013 1206	DIODE 1S1555
D431	407 005 7308	DIODE EH01Z
D471	408 007 8607	DIODE 1N4148

Ref. No.	Part No.	Description
D478	OR 407 013 1206	DIODE 1S1555
	408 007 2407	DIODE BV14
D491	OR 407 007 7108	DIODE EU01A
	407 013 1008	DIODE 1S1553
D492	OR 407 013 4306	DIODE 1S2076A
	OR 407 013 6508	DIODE 1S2471
	408 007 8607	DIODE 1N4148
	OR 407 013 1206	DIODE 1S1555
MISCELLANEOUS		
F301A	610 014 8956	FUSE CLIP
F301B	610 014 8956	FUSE CLIP
A102	610 038 9182	UHF VARACTOR TUNER
D121	409 013 0104	IC HZT33
	OR 409 026 8005	IC L5630
	OR 409 057 5103	IC UPC574J
△F301	423 006 1404	FUSE 250V 2A
IC171A	610 091 1482	HEAT SINK-D5VA
IC171B	411 004 4404	NUT HEX 3
IC171D	411 045 6702	SCR PAN+SW 3X8
IC431B	411 004 4404	NUT HEX 3
IC431D	411 045 6702	SCR PAN+SW 3X8
KA-1	610 014 3364	M/C TERMINAL PLUG
KA-2	610 014 3364	M/C TERMINAL PLUG
KB-1	610 014 3364	M/C TERMINAL PLUG
KB-2	610 014 3364	M/C TERMINAL PLUG
KC1-10	610 010 8042	HOUSING PLUG 10P
KDY	610 013 9442	MINI CONNECTOR 1P-SOCKET
KDY-1	610 014 3364	M/C TERMINAL PLUG
KDY-2	610 014 3364	M/C TERMINAL PLUG
KDY-3	610 014 3364	M/C TERMINAL PLUG
KDY-4	610 014 3364	M/C TERMINAL PLUG
KDY-5	610 014 3364	M/C TERMINAL PLUG
KDYS	610 013 9404	M/C TERMINAL SOCKET
KG-1	610 014 3364	M/C TERMINAL PLUG
KG-2	610 014 3364	M/C TERMINAL PLUG
KH	610 010 7779	SOCKET 9P
KI	610 010 7748	SOCKET 6P
KK	610 010 7786	SOCKET 10P
KL	610 010 7786	SOCKET 10P
KP	610 010 7984	HOUSING PLUG 4P
KS	610 010 7960	HOUSING PLUG 2P
KSC	610 014 3364	M/C TERMINAL PLUG
KT	610 010 7960	HOUSING PLUG 2P
KTX	610 013 9442	MINI CONNECTOR 1P-SOCKET
KTX-1	610 014 3364	M/C TERMINAL PLUG
KTX-2	610 014 3364	M/C TERMINAL PLUG
KTXS	610 013 9404	M/C TERMINAL SOCKET
KVC	610 013 9442	MINI CONNECTOR 1P-SOCKET
KVC-1	610 014 3364	M/C TERMINAL PLUG
KVC-2	610 014 3364	M/C TERMINAL PLUG
KVC-3	610 014 3364	M/C TERMINAL PLUG
KVCS	610 013 9404	M/C TERMINAL SOCKET
KX	610 010 7977	HOUSING PLUG 3P
PS301	408 000 3906	TH PTH451A138G180M270
	OR 408 003 6805	THERMISTOR 902P44E180MR14
Q303-A	610 057 7480	POWER H. S. ASSY. D8PC
Q303B	411 004 4404	NUT HEX 3
Q303D	411 045 2803	SCR PAN+SW 3X12
Q452-A	610 057 7480	POWER H. S. ASSY. D8PC
Q452B	411 004 4404	NUT HEX 3
Q452D	411 045 2803	SCR PAN+SW 3X12
TP-A	610 014 3364	M/C TERMINAL PLUG
TP-B	610 014 3364	M/C TERMINAL PLUG
TP-C	610 014 3364	M/C TERMINAL PLUG
TP-F	610 014 3364	M/C TERMINAL PLUG
TP-G	610 014 3364	M/C TERMINAL PLUG
TP-H	610 014 3364	M/C TERMINAL PLUG
TP-J	610 014 3364	M/C TERMINAL PLUG
TP-M	610 014 3364	M/C TERMINAL PLUG
TP-O	610 014 3364	M/C TERMINAL PLUG
VC201	610 003 0381	TRIMMER CONDENSER
X101	421 001 8800	SAW F TSF1326H

Ref. No.	Part No.	Description
X131	610 015 2908	CERAMIC FILTER
X132	610 015 2885	CERAMIC FILTER
X190	610 015 3509	CRYSTAL OSCILLATOR
610 046 3424 (CRT UNIT P8PC)		
TRANSISTORS		
Q601	405 015 3501	TR 2SC2688(2)-K
	OR 405 015 3600	TR 2SC2688(2)-L
	OR 405 015 3709	TR 2SC2688(2)-M
Q611	405 015 3501	TR 2SC2688(2)-K
	OR 405 015 3600	TR 2SC2688(2)-L
	OR 405 015 3709	TR 2SC2688(2)-M
Q621	405 015 3501	TR 2SC2688(2)-K
	OR 405 015 3600	TR 2SC2688(2)-L
	OR 405 015 3709	TR 2SC2688(2)-M
Q640	405 004 4809	TR 2SA608-F-CTV-NP
	OR 405 004 4205	TR 2SA608-E-CTV-NP
CAPACITORS		
C601	403 073 6403	CERAMIC 470P K 50V
C611	403 073 2900	CERAMIC 390P K 50V
C621	403 073 2900	CERAMIC 390P K 50V
C631	403 077 2708	CERAMIC 1000P P 2K
RESISTORS		
R601	401 019 1000	CARBON 390 JA 1/4W
R602	401 020 2003	CARBON 4.7K JA 1/4W
R603	401 013 5301	CARBON 1.2K JA 1/4W
R604	401 065 4604	OXIDE-MT 12K JA 2W
R605	401 002 0102	SOLID 3.3K KA 1/2W
R611	401 019 1000	CARBON 390 JA 1/4W
R612	401 020 2003	CARBON 4.7K JA 1/4W
R613	401 013 5301	CARBON 1.2K JA 1/4W
R614	401 065 4604	OXIDE-MT 12K JA 2W
R615	401 002 0102	SOLID 3.3K KA 1/2W
R621	401 019 1000	CARBON 390 JA 1/4W
R622	401 020 2003	CARBON 4.7K JA 1/4W
R623	401 015 2704	CARBON 1.8K JA 1/4W
R624	401 065 4604	OXIDE-MT 12K JA 2W
R625	401 002 0102	SOLID 3.3K KA 1/2W
R627	401 020 0801	CARBON 470 JA 1/4W
R630	401 002 0102	SOLID 3.3K KA 1/2W
R631	401 001 7607	SOLID 270K KA 1/2W
R641	401 020 2003	CARBON 4.7K JA 1/4W
R642	401 014 4105	CARBON 1.5K JA 1/4W
VARIABLE RESISTORS		
VR601	610 019 2355	VR B-1K
	OR 610 019 2348	VR B-1K
VR602	610 019 0108	VARIABLE RESISTOR
	OR 610 019 0092	VARIABLE RESISTOR
VR611	610 019 2355	VR B-1K
	OR 610 019 2348	VR B-1K
VR612	610 019 0092	VARIABLE RESISTOR
	OR 610 019 0108	VARIABLE RESISTOR
VR622	610 019 0092	VARIABLE RESISTOR
	OR 610 019 0108	VARIABLE RESISTOR
VR640	610 019 2355	VR B-1K
	OR 610 019 2348	VR B-1K
COILS		
L601	610 032 1267	INDUCTOR 430HK

Ref. No.	Part No.	Description
MISCELLANEOUS		
KTP6A	610 014 3364	M/C TERMINAL PLUG
KTP6B	610 014 3364	M/C TERMINAL PLUG
KTP6E	610 014 3364	M/C TERMINAL PLUG
KTP6M	610 014 3364	M/C TERMINAL PLUG
K6P	610 010 7991	HOUSING PLUG 5P
K6Q	610 010 7977	HOUSING PLUG 3P
K6S	610 012 5018	HOLDER 1P
K601	610 010 3986	CRT SOCKET
610 205 7560 (FRONT UNIT D8PD)		
TRANSISTORS		
Q1701	405 019 3804	TR 2SC536-G-NP
	OR 405 019 2708	TR 2SC536-F-NP
Q1731	405 019 3804	TR 2SC536-G-NP
	OR 405 019 2708	TR 2SC536-F-NP
Q1751	405 019 2708	TR 2SC536-F-NP
	OR 405 019 3804	TR 2SC536-G-NP
INTEGRATED CIRCUITS		
IC1701	410 044 4405	IC MAB8461PW146
IC1741	410 019 6403	IC PCD8572P
CAPACITORS		
C1701	403 071 7402	CERAMIC 2200P K 50V
C1711	403 022 5907	CERAMIC 33P J 50V
C1712	403 022 5907	CERAMIC 33P J 50V
C1721	403 069 8305	CERAMIC 0.01U Z 50V
C1722	403 041 2109	ELECT 47U M 10V
C1731	403 051 0607	ELECT 4.7U M 50V
C1781	403 071 7402	CERAMIC 2200P K 50V
RESISTORS		
R1701	401 016 2604	CARBON 220 JA 1/4W
R1702	401 015 1608	CARBON 180 JA 1/4W
R1703	401 016 4806	CARBON 22K JA 1/4W
R1711	401 012 9300	CARBON 1M JA 1/4W
R1719	401 012 4503	CARBON 100 JA 1/4W
R1720	401 012 4503	CARBON 100 JA 1/4W
R1721	401 012 4503	CARBON 100 JA 1/4W
R1722	401 020 0801	CARBON 470 JA 1/4W
R1723	401 020 0801	CARBON 470 JA 1/4W
R1724	401 020 0801	CARBON 470 JA 1/4W
R1725	401 020 0801	CARBON 470 JA 1/4W
R1726	401 020 0801	CARBON 470 JA 1/4W
R1727	401 012 7009	CARBON 10K JA 1/4W
R1734	401 017 2801	CARBON 27K JA 1/4W
R1735	401 020 0801	CARBON 470 JA 1/4W
R1736	401 012 4503	CARBON 100 JA 1/4W
R1738	401 012 4503	CARBON 100 JA 1/4W
R1739	401 012 4503	CARBON 100 JA 1/4W
R1740	401 012 4503	CARBON 100 JA 1/4W
R1741	401 012 4503	CARBON 100 JA 1/4W
R1742	401 012 4503	CARBON 100 JA 1/4W
R1743	401 012 4503	CARBON 100 JA 1/4W
R1744	401 012 4503	CARBON 100 JA 1/4W
R1751	401 014 4105	CARBON 1.5K JA 1/4W
R1752	401 023 2802	CARBON 8.2K JA 1/4W
R1753	401 014 5201	CARBON 15K JA 1/4W
R1761	401 007 7601	CARBON 150 JA 1/2W
R1762	401 007 7601	CARBON 150 JA 1/2W
R1771	401 012 8105	CARBON 100K JA 1/4W
R1781	401 012 7009	CARBON 10K JA 1/4W
R1782	401 016 3809	CARBON 2.2K JA 1/4W
R1783	401 016 3809	CARBON 2.2K JA 1/4W

Ref. No.	Part No.	Description
R1784	401 017 0807	CARBON 270 JA 1/4W
R1785	401 017 0807	CARBON 270 JA 1/4W
R1791	401 016 2604	CARBON 220 JA 1/4W
R1792	401 018 4903	CARBON 33K JA 1/4W
R1793	401 020 2003	CARBON 4.7K JA 1/4W
VARIABLE RESISTORS		
VR1791	610 019 8128	VR B-1K
	OR 610 019 8111	VR B-1K
VR1792	610 019 8142	VR B-10K
	OR 610 019 8135	VR B-10K
COILS		
L1701	610 029 6169	PEAKING COIL 27UH K
DIODES		
D1701	407 029 2907	LED SLP-181B-50
D1722	407 048 1608	ZENER DIODE EQA02-05M1
D1723	407 048 1608	ZENER DIODE EQA02-05M1
D1724	407 048 1608	ZENER DIODE EQA02-05M1
D1725	407 048 1608	ZENER DIODE EQA02-05M1
D1726	407 048 1608	ZENER DIODE EQA02-05M1
D1751	407 055 7907	ZENER DIODE RD3.6EL
D1781	408 007 8607	DIODE 1N4148
	OR 407 013 1206	DIODE 1S1555
D1782	408 007 8607	DIODE 1N4148
	OR 407 013 1206	DIODE 1S1555
D1783	408 007 8607	DIODE 1N4148
	OR 407 013 1206	DIODE 1S1555
D1784	408 007 8607	DIODE 1N4148
	OR 407 013 1206	DIODE 1S1555
MISCELLANEOUS		
D1701A	610 105 5161	LED HOLDER-D8PC
K17B-1	610 014 3364	M/C TERMINAL PLUG
K17B-2	610 014 3364	M/C TERMINAL PLUG
K17C	610 010 8042	HOUSING PLUG 10P
K17P	610 010 7991	HOUSING PLUG 5P
K17R	610 010 7984	HOUSING PLUG 4P
K17S	610 010 7960	HOUSING PLUG 2P
K17SP	610 010 7960	HOUSING PLUG 2P
K1701	610 010 5478	PHONE JACK
RC1701	610 048 4610	RC PREAMP E
SW1701	610 011 4630	PUSH SWITCH
SW1702	610 011 4630	PUSH SWITCH
SW1703	610 011 4630	PUSH SWITCH
SW1704	610 011 4630	PUSH SWITCH
SW1705	610 011 4630	PUSH SWITCH
SW1706	610 011 4630	PUSH SWITCH
SW1707	610 011 4630	PUSH SWITCH
SW1708	610 011 4630	PUSH SWITCH
SW1709	610 011 4630	PUSH SWITCH
SW1711	610 011 3244	PUSH SWITCH
X1711	610 012 0563	CERAMIC OSCILLATOR
Z1701	610 205 4569	SHIELD CASE-D8PC
610 046 3448 (TELETEXT UNIT D8PC)		
TRANSISTORS		
Q1004	405 019 2708	TR 2SC536-F-NP
	OR 405 019 3804	TR 2SC536-G-NP
Q1041	405 004 4205	TR 2SA608-E-CTV-NP
	OR 405 004 4809	TR 2SA608-F-CTV-NP
Q1051	405 019 2708	TR 2SC536-F-NP
	OR 405 019 3804	TR 2SC536-G-NP

Ref. No.	Part No.	Description
Q1052	405 019 2708	TR 25C536-F-NP
	OR 405 019 3804	TR 25C536-G-NP
Q1053	405 019 2708	TR 25C536-F-NP
	OR 405 019 3804	TR 25C536-G-NP
Q1054	405 019 3804	TR 25C536-G-NP
	OR 405 019 2708	TR 25C536-F-NP
Q1071	405 013 7006	TR 25C2274-F
	OR 405 013 6801	TR 25C2274-E
INTEGRATED CIRCUITS		
IC1001	410 039 5905	IC MAB8461PW115
IC1002	410 019 6403	IC PCD8572P
IC1011	409 107 8108	IC SAA5231
IC1031	410 051 0506	IC SAA5243P/E-M2
IC1032	409 012 7708	IC HM6264P-15
	OR 409 143 1705	IC LC3564PL-15
	OR 409 166 7302	IC LC3564P-15
	OR 409 163 1402	IC LC3664NL-85
	OR 409 120 4101	IC LC3664N-10
	OR 409 089 6000	IC LC3664N-12
	OR 409 120 4200	IC LC3664NL-10
	OR 409 163 1501	IC LC3664N-85
	OR 409 089 6109	IC LC3664NL-12
	OR 409 073 4906	IC TC5565PL-15
	OR 409 162 7504	IC TMM2064AP-10
	OR 409 054 3706	IC TMM2064P-10
	OR 409 162 7405	IC TMM2064AP-12
	OR 409 138 7705	IC UPD4364C-15
CAPACITORS		
C1001	403 067 5603	MT-COMPO 0.1U J 50V
C1002	403 022 5907	CERAMIC 33P J 50V
C1003	403 022 5907	CERAMIC 33P J 50V
C1004	403 069 8305	CERAMIC 0.01U Z 50V
C1011	403 059 6700	POLYESTER 0.022U K 50V
	OR 403 059 5901	POLYESTER 0.022U K 50V
C1012	403 042 7707	ELECT 22U M 16V
C1013	403 012 4309	CERAMIC 15P J 50V
C1014	403 069 0507	CERAMIC 1000P K 50V
C1015	403 073 6403	CERAMIC 470P K 50V
C1016	403 059 6700	POLYESTER 0.022U K 50V
	OR 403 059 5901	POLYESTER 0.022U K 50V
C1017	403 072 4400	CERAMIC 270P K 50V
C1018	403 009 3407	CERAMIC 100P J 50V
C1019	403 012 4309	CERAMIC 15P J 50V
C1020	403 019 7709	CERAMIC 27P J 50V
C1021	403 067 7706	MT-COMPO 0.047U J 50V
C1023	403 067 7706	MT-COMPO 0.047U J 50V
C1026	403 071 5606	CERAMIC 220P K 50V
C1027	403 067 8208	MT-COMPO 0.068U J 50V
C1028	403 086 5400	NP-ELECT 2.2U M 50V
C1029	403 069 8305	CERAMIC 0.01U Z 50V
C1031	403 067 5603	MT-COMPO 0.1U J 50V
C1032	403 043 9106	ELECT 47U M 16V
C1033	403 043 9106	ELECT 47U M 16V
C1044	403 071 7402	CERAMIC 2200P K 50V
C1071	403 041 4509	ELECT 470U M 10V
C1072	403 039 6508	ELECT 100U M 10V
C1081	403 067 7706	MT-COMPO 0.047U J 50V
C1082	403 043 9106	ELECT 47U M 16V
RESISTORS		
R1001	401 025 4200	CARBON 1.8K JA 1/6W
R1002	401 027 2303	CARBON 560 JA 1/6W
R1003	401 026 9907	CARBON 4.7K JA 1/6W
R1006	401 024 8001	CARBON 1H JA 1/6W
R1011	401 024 9305	CARBON 1.2K JA 1/6W
R1012	401 024 6700	CARBON 100 JA 1/6W
R1016	401 027 5908	CARBON 68K JA 1/6W

Ref. No.	Part No.	Description
R1027	401 026 9600	CARBON 470 JA 1/6W
R1029	401 026 9600	CARBON 470 JA 1/6W
R1033	401 025 8208	CARBON 22K JA 1/6W
R1034	401 024 7400	CARBON 10K JA 1/6W
R1035	401 024 7400	CARBON 10K JA 1/6W
R1041	401 027 9005	CARBON 82K JA 1/6W
R1042	401 024 7400	CARBON 10K JA 1/6W
R1043	401 026 9907	CARBON 4.7K JA 1/6W
R1044	401 024 7400	CARBON 10K JA 1/6W
R1046	401 024 7707	CARBON 100K JA 1/6W
R1051	401 026 4308	CARBON 3.3K JA 1/6W
R1052	401 025 7805	CARBON 2.2K JA 1/6W
R1053	401 027 6608	CARBON 75 JA 1/6W
R1054	401 026 4308	CARBON 3.3K JA 1/6W
R1055	401 025 7805	CARBON 2.2K JA 1/6W
R1056	401 027 6608	CARBON 75 JA 1/6W
R1057	401 026 4308	CARBON 3.3K JA 1/6W
R1058	401 025 7805	CARBON 2.2K JA 1/6W
R1059	401 027 6608	CARBON 75 JA 1/6W
R1060	401 026 4308	CARBON 3.3K JA 1/6W
R1061	401 027 5908	CARBON 68K JA 1/6W
R1062	401 027 6608	CARBON 75 JA 1/6W
R1063	401 024 7004	CARBON 1K JA 1/6W
R1064	401 024 7004	CARBON 1K JA 1/6W
R1065	401 024 7004	CARBON 1K JA 1/6W
R1066	401 024 7004	CARBON 1K JA 1/6W
R1071	401 010 7605	CARBON 560 JA 1/2W
R1081	401 026 4308	CARBON 3.3K JA 1/6W
R1082	401 027 8107	CARBON 82 JA 1/6W
R1083	401 025 7409	CARBON 220 JA 1/6W
TRANSFORMERS		
T1011	610 037 7547	S TRANS
COILS		
L1001	610 029 6725	PEAKING COIL 1.5UH M
L1010	610 029 6329	PEAKING COIL 4.7UH K
L1011	610 029 5667	PEAKING COIL
L1031	610 029 6725	PEAKING COIL 1.5UH M
L1061	610 029 6725	PEAKING COIL 1.5UH M
DIODES		
D1001	407 055 7907	ZENER DIODE RD3.6EL
D1041	407 012 5809	DIODE 1SS176
D1042	407 012 5809	DIODE 1SS176
MISCELLANEOUS		
K10H	610 010 7847	PLUG 9P
K10I	610 010 7816	PLUG 6P
X1001	610 012 0563	CERAMIC OSCILLATOR
X1011	610 012 1706	CRYSTAL OSCILLATOR
610 205 3722 (AV&PAL UNIT D8PD)		
TRANSISTORS		
Q1331	405 004 4205	TR 2SA608-E-CTV-NP
	OR 405 004 4809	TR 2SA608-F-CTV-NP
Q1351	405 019 2708	TR 25C536-F-NP
	OR 405 019 3804	TR 25C536-G-NP
Q1352	405 004 4205	TR 2SA608-E-CTV-NP
	OR 405 004 4809	TR 2SA608-F-CTV-NP
Q1353	405 019 2708	TR 25C536-F-NP
	OR 405 019 3804	TR 25C536-G-NP
Q1354	405 004 4809	TR 2SA608-F-CTV-NP
	OR 405 004 4205	TR 2SA608-E-CTV-NP

Ref. No.	Part No.	Description
Q1355	405 019 2708	TR 25C536-F-NP
	OR 405 019 3804	TR 25C536-G-NP
Q1361	405 019 2708	TR 25C536-F-NP
	OR 405 019 3804	TR 25C536-G-NP
Q1363	405 019 2708	TR 25C536-F-NP
	OR 405 019 3804	TR 25C536-G-NP
Q1371	405 019 3804	TR 25C536-F-NP
	OR 405 019 2708	TR 25C536-G-NP
Q1372	405 004 4205	TR 25A608-E-CTV-NP
	OR 405 004 4809	TR 25A608-F-CTV-NP
Q1381	405 019 2708	TR 25C536-F-NP
	OR 405 019 3804	TR 25C536-G-NP
Q1391	405 004 4205	TR 25A608-E-CTV-NP
	OR 405 004 4809	TR 25A608-F-CTV-NP
Q1392	405 019 3804	TR 25C536-G-NP
	OR 405 019 2708	TR 25C536-F-NP
INTEGRATED CIRCUITS		
IC1301	410 041 5801	IC TDA3566/N4
IC1351	409 020 8704	IC LC4066B
	OR 409 030 5809	IC MC14066B
IC1391	409 020 8704	IC LC4066B
	OR 409 030 5809	IC MC14066B
CAPACITORS		
C1301	403 069 8305	CERAMIC 0.01U Z 50V
C1302	403 013 1901	CERAMIC 150P J 50V
C1304	403 069 8305	CERAMIC 0.01U Z 50V
C1305	403 069 8305	CERAMIC 0.01U Z 50V
C1306	403 043 6006	ELECT 330U M 16V
C1307	403 067 7300	MT-COMPO 0.33U J 50V
C1308	403 051 0607	ELECT 4.7U M 50V
C1310	403 044 1703	ELECT 470U M 16V
C1312	403 048 6308	ELECT 0.47U M 50V
C1313	403 067 7805	MT-COMPO 0.47U J 50V
C1314	403 067 5603	MT-COMPO 0.1U J 50V
C1315	403 067 5603	MT-COMPO 0.1U J 50V
C1316	403 067 5603	MT-COMPO 0.1U J 50V
C1321	403 049 9803	ELECT 2.2U M 50V
C1330	403 041 8804	ELECT 10U M 16V
C1331	403 049 9803	ELECT 2.2U M 50V
C1332	403 010 5704	CERAMIC 12P J 50V
C1333	403 049 0008	ELECT 1U M 50V
C1334	403 060 8205	POLYESTER 0.033U K 50V
C1335	403 060 8205	POLYESTER 0.033U K 50V
C1338	403 067 7805	MT-COMPO 0.47U J 50V
C1339	403 067 7805	MT-COMPO 0.47U J 50V
C1340	403 072 4400	CERAMIC 270P K 50V
C1341	403 069 8305	CERAMIC 0.01U Z 50V
C1342	403 069 8305	CERAMIC 0.01U Z 50V
C1343	403 049 0008	ELECT 1U M 50V
C1350	403 043 9106	ELECT 47U M 16V
C1352	403 043 9106	ELECT 47U M 16V
C1353	403 069 8305	CERAMIC 0.01U Z 50V
C1355	403 019 7709	CERAMIC 27P J 50V
C1361	403 022 6300	CERAMIC 33P J 50V
C1362	403 043 0202	ELECT 220U M 16V
C1364	403 041 9405	ELECT 10U M 16V
C1366	403 041 8804	ELECT 10U M 16V
C1371	403 067 7805	MT-COMPO 0.47U J 50V
C1377	403 008 5501	CERAMIC 10P D 50V
C1378	403 019 7709	CERAMIC 27P J 50V
C1379	403 043 9106	ELECT 47U M 16V
RESISTORS		
R1301	401 027 8305	CARBON 820 JA 1/6W
R1306	401 027 9302	CARBON 820K JA 1/6W
R1307	401 024 6700	CARBON 100 JA 1/6W
R1308	401 024 7004	CARBON 1K JA 1/6W

Ref. No.	Part No.	Description
R1309	401 027 8305	CARBON 820 JA 1/6W
R1310	401 027 2303	CARBON 560 JA 1/6W
R1311	401 025 1605	CARBON 1.5K JA 1/6W
R1312	401 024 7004	CARBON 1K JA 1/6W
R1313	401 026 9600	CARBON 470 JA 1/6W
R1315	401 027 2303	CARBON 560 JA 1/6W
R1317	401 022 6801	CARBON 75 JA 1/4W
R1318	401 024 6700	CARBON 100 JA 1/6W
R1320	401 026 6609	CARBON 390 JA 1/6W
R1321	401 022 6801	CARBON 75 JA 1/4W
R1322	401 024 6700	CARBON 100 JA 1/6W
R1324	401 022 6801	CARBON 75 JA 1/4W
R1325	401 024 6700	CARBON 100 JA 1/6W
R1326	401 027 9005	CARBON 82K JA 1/6W
R1327	401 025 4606	CARBON 18K JA 1/6W
R1328	401 027 5908	CARBON 68K JA 1/6W
R1329	401 025 0004	CARBON 120K JA 1/6W
R1330	401 024 9701	CARBON 12K JA 1/6W
R1331	401 024 7707	CARBON 100K JA 1/6W
R1332	401 024 9701	CARBON 12K JA 1/6W
R1333	401 027 0309	CARBON 47K JA 1/6W
R1334	401 024 7004	CARBON 1K JA 1/6W
R1335	401 026 4605	CARBON 33K JA 1/6W
R1336	401 026 4605	CARBON 33K JA 1/6W
R1339	401 026 6609	CARBON 390 JA 1/6W
R1340	401 024 9305	CARBON 1.2K JA 1/6W
R1341	401 026 6609	CARBON 390 JA 1/6W
R1342	401 024 7400	CARBON 10K JA 1/6W
R1344	401 024 7400	CARBON 10K JA 1/6W
R1345	401 024 7400	CARBON 10K JA 1/6W
R1346	401 024 7400	CARBON 10K JA 1/6W
R1348	401 026 1307	CARBON 27K JA 1/6W
R1349	401 026 1000	CARBON 2.7K JA 1/6W
R1350	401 027 3003	CARBON 56K JA 1/6W
R1351	401 020 0801	CARBON 470 JA 1/4W
R1352	401 024 7004	CARBON 1K JA 1/6W
R1355	401 026 9600	CARBON 470 JA 1/6W
R1356	401 027 5007	CARBON 68 JA 1/6W
R1357	401 027 8305	CARBON 820 JA 1/6W
R1358	401 027 2303	CARBON 560 JA 1/6W
R1359	401 026 6609	CARBON 390 JA 1/6W
R1360	401 019 1000	CARBON 390 JA 1/4W
R1361	401 024 9008	CARBON 120 JA 1/6W
R1362	401 022 6801	CARBON 75 JA 1/4W
R1363	401 024 7707	CARBON 100K JA 1/6W
R1366	401 012 5708	CARBON 1K JA 1/4W
R1367	401 024 7707	CARBON 100K JA 1/6W
R1368	401 027 2303	CARBON 560 JA 1/6W
R1369	401 024 7707	CARBON 100K JA 1/6W
R1370	401 027 2303	CARBON 560 JA 1/6W
R1371	401 025 8208	CARBON 22K JA 1/6W
R1372	401 024 7400	CARBON 10K JA 1/6W
R1373	401 024 7707	CARBON 100K JA 1/6W
R1374	401 024 7707	CARBON 100K JA 1/6W
R1376	401 023 0709	CARBON 82 JA 1/4W
R1377	401 024 7004	CARBON 1K JA 1/6W
R1378	401 026 4308	CARBON 3.3K JA 1/6W
R1379	401 025 8208	CARBON 22K JA 1/6W
R1380	401 024 7707	CARBON 100K JA 1/6W
R1381	401 012 5708	CARBON 1K JA 1/4W
R1382	401 027 2600	CARBON 5.6K JA 1/6W
R1383	401 027 2600	CARBON 5.6K JA 1/6W
R1391	401 024 7400	CARBON 10K JA 1/6W
R1392	401 024 7400	CARBON 10K JA 1/6W
R1394	401 012 5708	CARBON 1K JA 1/4W
R1395	401 024 7400	CARBON 10K JA 1/6W
R1396	401 022 6801	CARBON 75 JA 1/4W
VARIABLE RESISTORS		
VR1331	610 019 3901	VARIABLE RESISTOR B-10K
	OR 610 019 2584	VR B-10K
VR1340	610 019 3864	VARIABLE RESISTOR B-1K
	OR 610 019 2560	VR B-1K

Ref. No.	Part No.	Description
TRANSFORMERS		
T1341	610 037 7004	S TRANS
COILS		
L1301	610 029 6466	PEAKING COIL 8.2UH K
L1311	610 030 0712	DELAY LINE
L1341	610 030 0934	DELAY LINE
	OR 610 030 0743	DELAY LINE
L1342	610 029 6466	PEAKING COIL 8.2UH K
L1351	610 029 5940	PEAKING COIL 100UH K
L1361	610 029 6169	PEAKING COIL 27UH K
L1378	610 029 6244	PEAKING COIL 33UH K
DIODES		
D1311	407 048 6900	ZENER DIODE EQA02-12A
	OR 407 048 7105	ZENER DIODE EQA02-12B
D1321	407 048 7501	ZENER DIODE EQA02-12Z
D1322	407 048 7501	ZENER DIODE EQA02-12Z
D1323	407 048 7501	ZENER DIODE EQA02-12Z
D1371	408 007 8607	DIODE 1N4148
	OR 407 013 1206	DIODE 1S1555
D1372	407 048 7501	ZENER DIODE EQA02-12Z
D1391	407 048 7501	ZENER DIODE EQA02-12Z
MISCELLANEOUS		
K13F1-2	610 010 4839	PLUG
K13G	610 010 6000	RCA JACK 1P
K13H	610 009 8275	SOCKET 21P
K13K	610 010 7854	PLUG 10P
K13L	610 010 7854	PLUG 10P
K13P	610 010 7991	HOUSING PLUG 5P
K13Q	610 010 7991	HOUSING PLUG 5P
K13T	610 010 7984	HOUSING PLUG 4P
K13V	610 010 7969	HOUSING PLUG 2P
K13VS	610 010 8059	HOUSING 2P
K13VS-1	610 010 8141	TERMINAL SOCKET
K13VS-2	610 010 8141	TERMINAL SOCKET
K13W	610 010 7991	HOUSING PLUG 5P
X1331	610 012 1850	CRYSTAL OSCILLATOR
Z1302	610 081 9887	SOCKET MTG BRKT-D8PC
610 046 3479 (I/F UNIT D8PD)		
TRANSISTORS		
Q2102	405 004 4205	TR 2SA608-E-CTV-NP
	OR 405 004 4809	TR 2SA608-F-CTV-NP
	OR 405 028 7909	TR 2SA608-G-CTV-NP
Q2103	405 004 4809	TR 2SA608-F-CTV-NP
	OR 405 004 4205	TR 2SA608-E-CTV-NP
	OR 405 028 7909	TR 2SA608-G-CTV-NP
Q2104	405 019 3804	TR 2SC536-G-NP
	OR 405 019 2708	TR 2SC536-F-NP
Q2105	405 028 7909	TR 2SA608-G-CTV-NP
	OR 405 004 4205	TR 2SA608-E-CTV-NP
	OR 405 004 4809	TR 2SA608-F-CTV-NP
Q2106	405 004 4205	TR 2SA608-E-CTV-NP
	OR 405 028 7909	TR 2SA608-G-CTV-NP
	OR 405 004 4809	TR 2SA608-F-CTV-NP
Q2107	405 019 3804	TR 2SC536-G-NP
	OR 405 019 2708	TR 2SC536-F-NP
Q2110	405 019 3804	TR 2SC536-G-NP
	OR 405 019 2708	TR 2SC536-F-NP
Q2120	405 019 2708	TR 2SC536-F-NP
	OR 405 019 3804	TR 2SC536-G-NP
Q2121	405 019 2708	TR 2SC536-F-NP
	OR 405 019 3804	TR 2SC536-G-NP

Ref. No.	Part No.	Description
Q2128	405 019 2708	TR 2SC536-F-NP
	OR 405 019 3804	TR 2SC536-G-NP
Q2131	405 019 3804	TR 2SC536-G-NP
	OR 405 019 2708	TR 2SC536-F-NP
Q2132	405 019 2708	TR 2SC536-F-NP
	OR 405 019 3804	TR 2SC536-G-NP
Q2133	405 019 2708	TR 2SC536-F-NP
	OR 405 019 3804	TR 2SC536-G-NP
Q2141	405 019 2708	TR 2SC536-F-NP
	OR 405 019 3804	TR 2SC536-G-NP
Q2142	405 028 7909	TR 2SA608-G-CTV-NP
	OR 405 004 4205	TR 2SA608-E-CTV-NP
	OR 405 004 4809	TR 2SA608-F-CTV-NP
Q2143	405 004 4205	TR 2SA608-E-CTV-NP
	OR 405 028 7909	TR 2SA608-G-CTV-NP
	OR 405 004 4809	TR 2SA608-F-CTV-NP
Q2144	405 028 7909	TR 2SA608-G-CTV-NP
	OR 405 004 4205	TR 2SA608-E-CTV-NP
	OR 405 004 4809	TR 2SA608-F-CTV-NP
Q2145	405 019 2708	TR 2SC536-F-NP
	OR 405 019 3804	TR 2SC536-G-NP
Q2146	405 019 3804	TR 2SC536-G-NP
	OR 405 019 2708	TR 2SC536-F-NP
Q2147	405 019 3804	TR 2SC536-G-NP
	OR 405 019 2708	TR 2SC536-F-NP
Q2150	405 019 2708	TR 2SC536-F-NP
	OR 405 019 3804	TR 2SC536-G-NP
Q2160	405 028 7909	TR 2SA608-G-CTV-NP
	OR 405 004 4205	TR 2SA608-E-CTV-NP
	OR 405 004 4809	TR 2SA608-F-CTV-NP
Q2151	405 019 2708	TR 2SC536-F-NP
	OR 405 019 3804	TR 2SC536-G-NP
Q2162	405 004 4809	TR 2SA608-F-CTV-NP
	OR 405 004 4205	TR 2SA608-E-CTV-NP
	OR 405 028 7909	TR 2SA608-G-CTV-NP
Q2163	405 019 3804	TR 2SC536-G-NP
	OR 405 019 2708	TR 2SC536-F-NP
Q2164	405 019 3804	TR 2SC536-G-NP
	OR 405 019 2708	TR 2SC536-F-NP
Q2171	405 019 2708	TR 2SC536-F-NP
	OR 405 019 3804	TR 2SC536-G-NP
Q2172	405 019 2708	TR 2SC536-F-NP
	OR 405 019 3804	TR 2SC536-G-NP
Q2173	405 019 3804	TR 2SC536-G-NP
	OR 405 019 2708	TR 2SC536-F-NP
Q2174	405 028 7909	TR 2SA608-G-CTV-NP
	OR 405 004 4205	TR 2SA608-E-CTV-NP
	OR 405 004 4809	TR 2SA608-F-CTV-NP
Q2175	405 019 3804	TR 2SC536-G-NP
	OR 405 019 2708	TR 2SC536-F-NP
Q2176	405 019 3804	TR 2SC536-G-NP
	OR 405 019 2708	TR 2SC536-F-NP
Q2181	405 019 2708	TR 2SC536-F-NP
	OR 405 019 3804	TR 2SC536-G-NP
Q2182	405 019 2708	TR 2SC536-F-NP
	OR 405 019 3804	TR 2SC536-G-NP
Q2183	405 019 3804	TR 2SC536-G-NP
	OR 405 019 2708	TR 2SC536-F-NP
INTEGRATED CIRCUITS		
IC2101	409 035 8409	IC M513085P
IC2102	409 020 6908	IC LC4011B
	OR 409 030 4000	IC MC14011B
	OR 409 032 7603	IC MN4011B
	OR 409 050 8309	IC TC4011BP
	OR 409 058 7809	IC UPD4011BC
IC2103	409 049 7504	IC TA7676P
IC2105	409 010 5508	IC HD74LS00P
	OR 409 038 0608	IC M74LS00P
	OR 409 042 5200	IC SN74LS00N
	OR 410 039 1808	IC SN74LS00N
IC2106	409 073 1707	IC AN5862K
IC2107	409 010 9209	IC HD74LS221P

Ref. No.	Part No.	Description
	OR 409 038 5702	IC M74LS221P
	OR 410 039 2508	IC SN74LS221N
IC2108	409 026 8609	IC L78M05-RA
CAPACITORS		
C2101	403 069 8305	CERAMIC 0.01U Z 50V
C2102	403 030 5104	CERAMIC 68P J 50V
C2103	403 041 8804	ELECT 10U M 16V
C2104	403 049 0008	ELECT 1U M 50V
C2105	403 049 0008	ELECT 1U M 50V
C2106	403 049 9803	ELECT 2.2U M 50V
C2107	403 061 4008	POLYESTER 0.039U K 50V
C2108	403 059 3600	POLYESTER 2200P K 50V
C2110	403 069 8305	CERAMIC 0.01U Z 50V
C2111	403 013 1901	CERAMIC 150P J 50V
C2112	403 028 2009	CERAMIC 56P J 50V
C2113	403 069 8305	CERAMIC 0.01U Z 50V
C2114	403 069 8305	CERAMIC 0.01U Z 50V
C2115	403 049 0008	ELECT 1U M 50V
C2116	403 048 6308	ELECT 0.47U M 50V
C2118	403 069 8305	CERAMIC 0.01U Z 50V
C2119	403 011 3808	CERAMIC 120P J 50V
C2120	403 069 8305	CERAMIC 0.01U Z 50V
C2121	403 048 6308	ELECT 0.47U M 50V
C2122	403 059 5901	POLYESTER 0.022U K 50V
C2123	403 069 8305	CERAMIC 0.01U Z 50V
C2124	403 014 8008	CERAMIC 180P J 50V
C2125	403 069 8305	CERAMIC 0.01U Z 50V
C2126	403 069 8305	CERAMIC 0.01U Z 50V
C2127	403 041 2109	ELECT 47U M 10V
C2128	403 069 8305	CERAMIC 0.01U Z 50V
C2130	403 050 6600	ELECT 3.3U M 50V
C2131	403 070 8400	CERAMIC 1500P K 50V
C2132	403 060 8205	POLYESTER 0.033U K 50V
C2133	403 091 2401	TA-SOLID 2.2U K 16V
C2134	403 070 8400	CERAMIC 1500P K 50V
C2135	403 058 0303	POLYESTER 1500P J 50V
C2136	OR 403 059 6700	POLYESTER 0.022U K 50V
	OR 403 059 5901	POLYESTER 0.022U K 50V
C2137	403 060 8205	POLYESTER 0.033U K 50V
C2138	403 043 0202	ELECT 220U M 16V
C2139	403 069 8305	CERAMIC 0.01U Z 50V
C2140	403 086 5400	NP-ELECT 2.2U M 50V
C2141	403 057 0403	POLYESTER 0.01U K 50V
C2142	403 063 4907	POLYESTER 8200P J 50V
C2143	403 057 5101	POLYESTER 1200P J 50V
C2144	403 049 0008	ELECT 1U M 50V
C2145	403 057 5101	POLYESTER 1200P J 50V
C2146	403 049 0008	ELECT 1U M 50V
C2147	403 058 7401	POLYESTER 1800P J 50V
C2148	403 041 2109	ELECT 47U M 10V
C2149	403 069 8305	CERAMIC 0.01U Z 50V
C2151	403 069 8305	CERAMIC 0.01U Z 50V
C2152	403 033 3602	CERAMIC 82P J 50V
C2153	403 018 6307	CERAMIC 220P J 50V
C2154	403 041 8804	ELECT 10U M 16V
C2155	403 069 8305	CERAMIC 0.01U Z 50V
C2156	403 069 8305	CERAMIC 0.01U Z 50V
C2157	403 041 8804	ELECT 10U M 16V
C2158	403 069 8305	CERAMIC 0.01U Z 50V
C2159	403 041 8804	ELECT 10U M 16V
C2160	403 046 9905	ELECT 4.7U M 25V
C2161	403 041 2109	ELECT 47U M 10V
C2162	403 049 9803	ELECT 2.2U M 50V
C2164	403 014 8008	CERAMIC 180P J 50V
C2165	403 014 8008	CERAMIC 180P J 50V
C2166	403 069 8305	CERAMIC 0.01U Z 50V
C2167	403 041 8804	ELECT 10U M 16V
C2168	403 043 0202	ELECT 220U M 16V
C2169	403 067 5603	MT-COMPO 0.1U J 50V
C2171	403 058 1102	POLYESTER 1500P K 50V
C2172	403 069 8305	CERAMIC 0.01U Z 50V
C2173	403 014 0408	CERAMIC 18P J 50V

Ref. No.	Part No.	Description
C2174	403 056 7908	POLYESTER 1000P K 50V
C2175	403 050 6600	ELECT 3.3U M 50V
C2177	403 046 9905	ELECT 4.7U M 25V
C2178	403 069 8305	CERAMIC 0.01U Z 50V
C2179	403 057 2803	POLYESTER 0.1U K 50V
C2180	403 069 8305	CERAMIC 0.01U Z 50V
C2181	403 042 2405	ELECT 100U M 16V
C2183	403 069 8305	CERAMIC 0.01U Z 50V
C2184	403 069 8305	CERAMIC 0.01U Z 50V
C2185	403 069 8305	CERAMIC 0.01U Z 50V
C2186	403 069 8305	CERAMIC 0.01U Z 50V
C2187	403 067 5603	MT-COMPO 0.1U J 50V
C2188	403 062 0306	POLYESTER 0.047U K 50V
C2189	403 062 0306	POLYESTER 0.047U K 50V
C2190	403 067 5603	MT-COMPO 0.1U J 50V
C2191	403 062 0306	POLYESTER 0.047U K 50V
C2192	403 067 5603	MT-COMPO 0.1U J 50V
C2193	403 041 8804	ELECT 10U M 16V
C2194	403 041 8804	ELECT 10U M 16V
C2195	403 041 8804	ELECT 10U M 16V
C2196	403 046 9905	ELECT 4.7U M 25V
C2197	403 046 9905	ELECT 4.7U M 25V
C2198	403 046 9905	ELECT 4.7U M 25V
RESISTORS		
RE1	401 024 6700	CARBON 100 JA 1/6W
RE2	401 025 2305	CARBON 150K JA 1/6W
RE3	401 027 2600	CARBON 5.6K JA 1/6W
RE4	401 026 1000	CARBON 2.7K JA 1/6W
RE5	401 026 1000	CARBON 2.7K JA 1/6W
RE6	401 026 9600	CARBON 470 JA 1/6W
RE7	401 024 7004	CARBON 1K JA 1/6W
RF1	401 025 1605	CARBON 1.5K JA 1/6W
RF2	401 025 4606	CARBON 18K JA 1/6W
RF3	401 026 4605	CARBON 33K JA 1/6W
RF4	401 024 9305	CARBON 1.2K JA 1/6W
RG1	401 024 9701	CARBON 12K JA 1/6W
RG2	401 025 2305	CARBON 150K JA 1/6W
RG3	401 025 1605	CARBON 1.5K JA 1/6W
RG4	401 025 4606	CARBON 18K JA 1/6W
RH1	401 027 8602	CARBON 8.2K JA 1/6W
RH2	401 027 3003	CARBON 56K JA 1/6W
RH3	401 024 7004	CARBON 1K JA 1/6W
RH4	401 024 9305	CARBON 1.2K JA 1/6W
RH5	401 024 9305	CARBON 1.2K JA 1/6W
RH6	401 027 5205	CARBON 680 JA 1/6W
RH7	401 026 4605	CARBON 33K JA 1/6W
RH8	401 027 3003	CARBON 56K JA 1/6W
RJ0	401 027 2600	CARBON 5.6K JA 1/6W
RJ1	401 024 7004	CARBON 1K JA 1/6W
RJ2	401 024 7004	CARBON 1K JA 1/6W
RJ3	401 025 1605	CARBON 1.5K JA 1/6W
RJ4	401 024 7004	CARBON 1K JA 1/6W
RJ5	401 024 7004	CARBON 1K JA 1/6W
RJ6	401 027 2600	CARBON 5.6K JA 1/6W
RJ8	401 024 7004	CARBON 1K JA 1/6W
RJ9	401 027 6608	CARBON 75 JA 1/6W
RM1	401 027 8107	CARBON 82 JA 1/6W
RM2	401 027 9005	CARBON 82K JA 1/6W
RM3	401 027 2600	CARBON 5.6K JA 1/6W
RM4	401 026 1000	CARBON 2.7K JA 1/6W
RM5	401 026 1000	CARBON 2.7K JA 1/6W
RM6	401 026 9600	CARBON 470 JA 1/6W
RM7	401 024 7004	CARBON 1K JA 1/6W
RM8	401 024 7400	CARBON 10K JA 1/6W
RM8	401 024 7400	CARBON 10K JA 1/6W
RM8	401 025 7805	CARBON 2.2K JA 1/6W
RP1	401 026 4605	CARBON 33K JA 1/6W
RP2	401 024 7004	CARBON 1K JA 1/6W
RP3	401 026 9907	CARBON 4.7K JA 1/6W
RP4	401 027 2600	CARBON 5.6K JA 1/6W
RP5	401 026 1307	CARBON 27K JA 1/6W
RP6	401 024 7004	CARBON 1K JA 1/6W

Ref. No.	Part No.	Description
RU7	401 026 9907	CARBON 4.7K JA 1/6W
RU8	401 026 4308	CARBON 3.3K JA 1/6W
RY3	401 027 5502	CARBON 6.8K JA 1/6W
RY4	401 025 7409	CARBON 220 JA 1/6W
RY7	401 025 8208	CARBON 22K JA 1/6W
RY8	401 025 2305	CARBON 150K JA 1/6W
R2102	401 027 8602	CARBON 8.2K JA 1/6W
R2103	401 024 7400	CARBON 10K JA 1/6W
R2104	401 024 9701	CARBON 12K JA 1/6W
R2105	401 026 9907	CARBON 4.7K JA 1/6W
R2106	401 025 1605	CARBON 1.5K JA 1/6W
R2107	401 025 1605	CARBON 1.5K JA 1/6W
R2108	401 025 7805	CARBON 2.2K JA 1/6W
R2109	401 026 1307	CARBON 27K JA 1/6W
R2110	401 027 0309	CARBON 47K JA 1/6W
R2111	401 026 7408	CARBON 39K JA 1/6W
R2112	401 027 5205	CARBON 680 JA 1/6W
R2113	401 024 7400	CARBON 10K JA 1/6W
R2114	401 025 2503	CARBON 1.5M JA 1/6W
R2115	401 024 7707	CARBON 100K JA 1/6W
R2116	401 025 1902	CARBON 15K JA 1/6W
R2117	401 024 9701	CARBON 12K JA 1/6W
R2118	401 025 0202	CARBON 1.2M JA 1/6W
R2119	401 024 7400	CARBON 10K JA 1/6W
R2120	401 027 2303	CARBON 560 JA 1/6W
R2121	401 026 6609	CARBON 390 JA 1/6W
R2122	401 027 2303	CARBON 560 JA 1/6W
R2128	401 024 7004	CARBON 1K JA 1/6W
R2129	401 026 9907	CARBON 4.7K JA 1/6W
R2130	401 025 7409	CARBON 220 JA 1/6W
R2131	401 025 4606	CARBON 18K JA 1/6W
R2132	401 027 2600	CARBON 5.6K JA 1/6W
R2133	401 027 9005	CARBON 82K JA 1/6W
R2134	401 027 2303	CARBON 560 JA 1/6W
R2135	401 027 8602	CARBON 8.2K JA 1/6W
R2136	401 024 7400	CARBON 10K JA 1/6W
R2137	401 024 9008	CARBON 120 JA 1/6W
R2138	401 026 6609	CARBON 390 JA 1/6W
R2139	401 024 7707	CARBON 100K JA 1/6W
R2140	401 027 2600	CARBON 5.6K JA 1/6W
R2141	401 026 0607	CARBON 270 JA 1/6W
R2142	401 026 4902	CARBON 330K JA 1/6W
R2143	401 027 8305	CARBON 820 JA 1/6W
R2144	401 025 7409	CARBON 220 JA 1/6W
R2145	401 025 1605	CARBON 1.5K JA 1/6W
R2146	401 025 1605	CARBON 1.5K JA 1/6W
R2147	401 026 4308	CARBON 3.3K JA 1/6W
R2148	401 024 7004	CARBON 1K JA 1/6W
R2149	401 024 7004	CARBON 1K JA 1/6W
R2150	401 026 9907	CARBON 4.7K JA 1/6W
R2151	401 024 6700	CARBON 100 JA 1/6W
R2152	401 026 4308	CARBON 3.3K JA 1/6W
R2153	401 025 1605	CARBON 1.5K JA 1/6W
R2154	401 024 7004	CARBON 1K JA 1/6W
R2155	401 025 1605	CARBON 1.5K JA 1/6W
R2156	401 026 1307	CARBON 27K JA 1/6W
R2157	401 027 3003	CARBON 56K JA 1/6W
R2158	401 025 1605	CARBON 1.5K JA 1/6W
R2159	401 025 1605	CARBON 1.5K JA 1/6W
R2160	401 025 1605	CARBON 1.5K JA 1/6W
R2161	401 024 7004	CARBON 1K JA 1/6W
R2162	401 027 8305	CARBON 820 JA 1/6W
R2163	401 024 7004	CARBON 1K JA 1/6W
R2164	401 026 1000	CARBON 2.7K JA 1/6W
R2165	401 026 1000	CARBON 2.7K JA 1/6W
R2166	401 025 1605	CARBON 1.5K JA 1/6W
R2167	401 026 7002	CARBON 3.9K JA 1/6W
R2168	401 026 1000	CARBON 2.7K JA 1/6W
R2169	401 025 1605	CARBON 1.5K JA 1/6W
R2170	401 025 1605	CARBON 1.5K JA 1/6W
R2171	401 026 6609	CARBON 390 JA 1/6W
R2172	401 026 7002	CARBON 3.9K JA 1/6W
R2173	401 026 9600	CARBON 470 JA 1/6W
R2174	401 024 6700	CARBON 100 JA 1/6W
R2175	401 026 9907	CARBON 4.7K JA 1/6W

Ref. No.	Part No.	Description
R2176	401 026 9907	CARBON 4.7K JA 1/6W
R2177	401 027 5205	CARBON 680 JA 1/6W
R2179	401 026 0607	CARBON 270 JA 1/6W
R2180	401 027 5205	CARBON 680 JA 1/6W
R2182	401 026 0607	CARBON 270 JA 1/6W
R2183	401 027 5205	CARBON 680 JA 1/6W
R2185	401 026 0607	CARBON 270 JA 1/6W
R2186	401 025 7805	CARBON 2.2K JA 1/6W
R2187	401 027 5205	CARBON 680 JA 1/6W
R2188	401 027 9005	CARBON 82K JA 1/6W
R2189	401 024 9701	CARBON 12K JA 1/6W
R2190	401 027 9005	CARBON 82K JA 1/6W
R2191	401 024 9701	CARBON 12K JA 1/6W
R2192	401 027 9005	CARBON 82K JA 1/6W
R2193	401 024 9701	CARBON 12K JA 1/6W
R2194	401 027 6608	CARBON 75 JA 1/6W
R2195	401 027 6608	CARBON 75 JA 1/6W
R2196	401 027 6608	CARBON 75 JA 1/6W
R2197	401 027 6608	CARBON 75 JA 1/6W
R2198	401 027 6608	CARBON 75 JA 1/6W
R2199	401 027 6608	CARBON 75 JA 1/6W
VARIABLE RESISTORS		
VR2102	610 018 9904	VA B-20K
	OR 610 018 9911	VARIABLE RESISTOR
	OR 610 019 2591	VR B-20K
VR2103	610 018 9720	VR B-10K
	OR 610 019 2584	VR B-10K
	OR 610 018 9706	VR B-10K
VR2104	610 018 9744	VR B-1K
	OR 610 019 2560	VR B-1K
	OR 610 018 9751	VR B-1K
VR2105	610 019 2584	VR B-10K
	OR 610 018 9706	VR B-10K
	OR 610 018 9720	VR B-10K
VR2191	610 019 0160	VA B-3K
	OR 610 019 0177	VARIABLE RESISTOR
VR2192	610 019 0160	VA B-3K
	OR 610 019 0177	VARIABLE RESISTOR
TRANSFORMERS		
T2101	610 037 4546	S COIL
T2102	610 037 7028	S TRANS
COILS		
L2101	610 030 0712	DELAY LINE
L2102	610 029 6367	PEAKING COIL 5.6UH K
L2103	610 029 6466	PEAKING COIL 8.2UH K
L2104	610 032 6699	1H DELAYLINE
	OR 610 032 6705	1H DELAYLINE
L2105	610 031 3019	PEAKING COIL 10UH K
L2106	610 029 6145	PEAKING COIL 220UH K
DIODES		
D2101	407 005 7308	DIODE EM01Z
D2111	407 012 5809	DIODE 1SS176
D2112	407 012 5809	DIODE 1SS176
D2131	407 048 2407	ZENER DIODE EQA02-06E
	OR 407 048 2308	ZENER DIODE EQA02-06D
D2151	407 012 5809	DIODE 1SS176
D2152	407 012 5809	DIODE 1SS176
D2153	407 012 5809	DIODE 1SS176
D2171	407 012 5809	DIODE 1SS176
D2172	407 012 5809	DIODE 1SS176
D2173	407 012 5809	DIODE 1SS176

Ref. No.	Part No.	Description
MISCELLANEOUS		
A2101	409 141 4708	IC JUA523 ✓ <i>PIP UNIT</i> 41-5D18
A2101A	412 000 0209	SCR E-TAP FLG 3X10E
A2101B	412 000 0209	SCR E-TAP FLG 3X10E
A2101C	412 000 0209	SCR E-TAP FLG 3X10E
K21MP	610 010 7984	HOUSING PLUG 4P
K21NP	610 010 7960	HOUSING PLUG 2P
K21PP	610 010 7991	HOUSING PLUG 5P
K21QP	610 010 7991	HOUSING PLUG 5P
K21RP	610 010 8035	HOUSING PLUG 9P
K21TP	610 010 7984	HOUSING PLUG 4P
K21V	610 010 9209	SOCKET 6P
K21W	610 010 9209	SOCKET 6P
K21X	610 010 9216	SOCKET 9P
K21Y	610 010 9209	SOCKET 6P
K21Z	610 010 9209	SOCKET 6P
X2101	610 012 0525	CRYSTAL OSCILLATOR
X2141	610 012 2017	CERAMIC OSCILLATOR
(OUT OF CIRCUIT BOARDS)		
PICTURE TUBE		
△Q901	414 001 3500	CRT A51JRU40X02(HW)
COILS		
△L901	610 030 4437 OR 610 204 8537	DEGAUSSING COIL DEGAUSSING COIL
MISCELLANEOUS		
KA	610 013 9480	MINI CONNECTOR 2P-SOCKET
KA-1	610 013 9404	M/C TERMINAL SOCKET
KA-2	610 013 9404	M/C TERMINAL SOCKET
KB	610 013 9480	MINI CONNECTOR 2P-SOCKET
KB-1	610 013 9404	M/C TERMINAL SOCKET
KB-2	610 013 9404	M/C TERMINAL SOCKET
KC	610 010 8134	HOUSING 10P
KC-1	610 010 8141	TERMINAL SOCKET
KC-10	610 010 8141	TERMINAL SOCKET
KC-2	610 010 8141	TERMINAL SOCKET
KC-3	610 010 8141	TERMINAL SOCKET
KC-4	610 010 8141	TERMINAL SOCKET
KC-5	610 010 8141	TERMINAL SOCKET
KC-6	610 010 8141	TERMINAL SOCKET
KC-7	610 010 8141	TERMINAL SOCKET
KC-8	610 010 8141	TERMINAL SOCKET
KC-9	610 010 8141	TERMINAL SOCKET
KDY	610 013 9596	MINI CONNECTOR 5P-SOCKET
KDY-1	610 013 9404	M/C TERMINAL SOCKET
KDY-2	610 013 9404	M/C TERMINAL SOCKET
KDY-3	610 013 9404	M/C TERMINAL SOCKET
KDY-4	610 013 9404	M/C TERMINAL SOCKET
KFOP	610 155 9720	LEAD HOLDER-SHA
KFOS1	610 013 7882	TERMINAL SOCKET-L
KP	610 010 8073	HOUSING 4P
KP-1	610 010 8141	TERMINAL SOCKET
KP-2	610 010 8141	TERMINAL SOCKET
KP-3	610 010 8141	TERMINAL SOCKET
KP-4	610 010 8141	TERMINAL SOCKET
KS	610 010 8059	HOUSING 2P
KS-1	610 010 8141	TERMINAL SOCKET
KS-2	610 010 8141	TERMINAL SOCKET
KSC	610 013 9442	MINI CONNECTOR 1P-SOCKET
KSC-1	610 013 9404	M/C TERMINAL SOCKET
KT	610 010 8059	HOUSING 2P
KT-1	610 010 8141	TERMINAL SOCKET
KT-2	610 010 8141	TERMINAL SOCKET
KX	610 010 8066	HOUSING 3P
KX-1	610 010 8141	TERMINAL SOCKET

Ref. No.	Part No.	Description
KX-2	610 010 8141	TERMINAL SOCKET
KX-3	610 010 8141	TERMINAL SOCKET
K13P	610 010 8080	HOUSING 5P
K13P-1	610 010 8141	TERMINAL SOCKET
K13P-2	610 010 8141	TERMINAL SOCKET
K13P-3	610 010 8141	TERMINAL SOCKET
K13P-4	610 010 8141	TERMINAL SOCKET
K13P-5	610 010 8141	TERMINAL SOCKET
K13Q	610 010 8080	HOUSING 5P
K13Q-1	610 010 8141	TERMINAL SOCKET
K13Q-2	610 010 8141	TERMINAL SOCKET
K13Q-3	610 010 8141	TERMINAL SOCKET
K13Q-4	610 010 8141	TERMINAL SOCKET
K13Q-5	610 010 8141	TERMINAL SOCKET
K13T	610 010 8073	HOUSING 4P
K13T-1	610 010 8141	TERMINAL SOCKET
K13T-2	610 010 8141	TERMINAL SOCKET
K13T-3	610 010 8141	TERMINAL SOCKET
K13T-4	610 010 8141	TERMINAL SOCKET
K13W	610 010 8080	HOUSING 5P
K13W-1	610 010 8141	TERMINAL SOCKET
K13W-2	610 010 8141	TERMINAL SOCKET
K13W-3	610 010 8141	TERMINAL SOCKET
K13W-4	610 010 8141	TERMINAL SOCKET
K13W-5	610 010 8141	TERMINAL SOCKET
K17B	610 013 9480	MINI CONNECTOR 2P-SOCKET
K17B-1	610 013 9404	M/C TERMINAL SOCKET
K17B-2	610 013 9404	M/C TERMINAL SOCKET
K17C	610 010 8134	HOUSING 10P
K17C-1	610 010 8141	TERMINAL SOCKET
K17C-10	610 010 8141	TERMINAL SOCKET
K17C-2	610 010 8141	TERMINAL SOCKET
K17C-3	610 010 8141	TERMINAL SOCKET
K17C-4	610 010 8141	TERMINAL SOCKET
K17C-5	610 010 8141	TERMINAL SOCKET
K17C-6	610 010 8141	TERMINAL SOCKET
K17C-7	610 010 8141	TERMINAL SOCKET
K17C-8	610 010 8141	TERMINAL SOCKET
K17C-9	610 010 8141	TERMINAL SOCKET
K17P	610 010 8080	HOUSING 5P
K17P-1	610 010 8141	TERMINAL SOCKET
K17P-2	610 010 8141	TERMINAL SOCKET
K17P-3	610 010 8141	TERMINAL SOCKET
K17P-4	610 010 8141	TERMINAL SOCKET
K17P-5	610 010 8141	TERMINAL SOCKET
K17R	610 010 8073	HOUSING 4P
K17R-1	610 010 8141	TERMINAL SOCKET
K17R-2	610 010 8141	TERMINAL SOCKET
K17R-3	610 010 8141	TERMINAL SOCKET
K17R-4	610 010 8141	TERMINAL SOCKET
K17S	610 010 8059	HOUSING 2P
K17S-1	610 010 8141	TERMINAL SOCKET
K17S-2	610 010 8141	TERMINAL SOCKET
K17SP	610 010 8059	HOUSING 2P
K17SP-1	610 010 8141	TERMINAL SOCKET
K17SP-2	610 010 8141	TERMINAL SOCKET
K21MS	610 010 8073	HOUSING 4P
K21MS-1	610 010 8141	TERMINAL SOCKET
K21MS-2	610 010 8141	TERMINAL SOCKET
K21MS-3	610 010 8141	TERMINAL SOCKET
K21MS-4	610 010 8141	TERMINAL SOCKET
K21NS	610 010 8059	HOUSING 2P
K21NS-1	610 010 8141	TERMINAL SOCKET
K21NS-2	610 010 8141	TERMINAL SOCKET
K21PS	610 010 8080	HOUSING 5P
K21PS-1	610 010 8141	TERMINAL SOCKET
K21PS-2	610 010 8141	TERMINAL SOCKET
K21PS-3	610 010 8141	TERMINAL SOCKET
K21PS-4	610 010 8141	TERMINAL SOCKET
K21PS-5	610 010 8141	TERMINAL SOCKET
K21QS	610 010 8080	HOUSING 5P
K21QS-1	610 010 8141	TERMINAL SOCKET
K21QS-2	610 010 8141	TERMINAL SOCKET
K21QS-3	610 010 8141	TERMINAL SOCKET
K21QS-4	610 010 8141	TERMINAL SOCKET

Ref. No.	Part No.	Description
K21QS-5	610 010 8141	TERMINAL SOCKET
K21RS	610 010 8127	HOUSING 9P
K21RS-1	610 010 8141	TERMINAL SOCKET
K21RS-2	610 010 8141	TERMINAL SOCKET
K21RS-3	610 010 8141	TERMINAL SOCKET
K21RS-4	610 010 8141	TERMINAL SOCKET
K21RS-5	610 010 8141	TERMINAL SOCKET
K21RS-6	610 010 8141	TERMINAL SOCKET
K21RS-7	610 010 8141	TERMINAL SOCKET
K21RS-8	610 010 8141	TERMINAL SOCKET
K21RS-9	610 010 8141	TERMINAL SOCKET
K21TS	610 010 8073	HOUSING 4P
K21TS-1	610 010 8141	TERMINAL SOCKET
K21TS-2	610 010 8141	TERMINAL SOCKET
K21TS-3	610 010 8141	TERMINAL SOCKET
K21TS-4	610 010 8141	TERMINAL SOCKET
K6P	610 010 8080	HOUSING 5P
K6P-1	610 010 8141	TERMINAL SOCKET
K6P-2	610 010 8141	TERMINAL SOCKET
K6P-3	610 010 8141	TERMINAL SOCKET
K6P-4	610 010 8141	TERMINAL SOCKET
K6P-5	610 010 8141	TERMINAL SOCKET
K6Q	610 010 8066	HOUSING 3P
K6Q-1	610 010 8141	TERMINAL SOCKET
K6Q-2	610 010 8141	TERMINAL SOCKET
K6Q-3	610 010 8141	TERMINAL SOCKET
MO. 1	610 013 9404	M/C TERMINAL SOCKET
NO. 2	610 013 9442	MINI CONNECTOR 1P-SOCKET
SP901	610 055 5471	SPEAKER
	OR 610 055 6263	SPEAKER
△ W901	610 011 7068	AC CORD
W902	610 024 2531	GROUNDING CONNECTOR
Z1	610 082 4966	GROUNDING SPRING-BGAP

RTV servis Horvat

Kešinci, 31402 Semeljci

031-856-139

031-856-637

098-788-319

rtv-servis-horvat@os.tel.hr

Croatia